



CORRECTIVE SERVICES

AUSTRALIA

EMBARGO: 11:30AM (CANBERRA TIME) THURS 27 JUN 2002

CONTENTS

	<i>page</i>
Notes	2
Summary of findings	3

TABLES

1 Persons in prison custody	6
2 Persons in prison custody, by sex and type of prison custody	8
3 Persons in prison custody, by legal status and sentence type	14
4 Sentenced receptions into prison custody, by type of sentence ..	18
5 Indigenous persons in prison custody, by sex	19
6 Indigenous persons in prison custody, by legal status and sentence type	22
7 Persons in periodic detention, by sex	26
8 Federal sentenced persons in prison custody, by sex	28
9 Persons in community-based corrections, by sex	29
10 Persons in community-based corrections, by type of order	30

ADDITIONAL INFORMATION

Explanatory notes	31
Appendix	35
Glossary	36

- For further information about these and related statistics, contact Robert Letheby on Melbourne 03 9615 7381 or the National Information and Referral Service on 1300 135 070.

NOTES

FORTHCOMING ISSUES

<i>ISSUE</i>	<i>RELEASE DATE</i>
June 2002	26 September 2002
September 2002	19 December 2002



ABOUT THIS PUBLICATION

This publication presents information on persons in custody and community-based corrections. The statistics are derived from information collected by the Australian Bureau of Statistics from administrative records held by corrective services agencies in each State and Territory, and from the Federal Attorney-General's Department for details on Federal prisoners. Details are provided for each State and Territory on numbers and imprisonment rates by type of custody (i.e. open or secure custody or periodic detention). Information is also presented on prisoner numbers by legal status (sentenced or unsentenced) and by sentence type, for all prisoners and for Indigenous prisoners, together with the number of sentenced receptions into custody and the number of Federal prisoners.

The ABS acknowledges the valuable contribution of the Board of Management, the Advisory Group of the National Corrective Services Statistics Unit and the staff of the various agencies that provide the statistics that are presented in this publication.

SYMBOLS AND OTHER USAGES

ABS	Australian Bureau of Statistics
ERP	Estimated Resident Population
n.a.	not available
n.p.	not published
r	figures or series revised since previous issue
. .	not applicable
—	nil or rounded to zero

Where figures have been rounded discrepancies may occur between the sum of component items and the total.

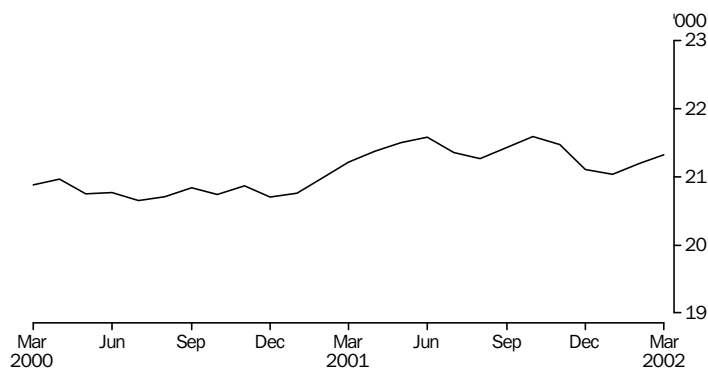
Dennis Trewin
Australian Statistician

SUMMARY OF FINDINGS

NUMBER OF PRISONERS

In the March quarter 2002 the average daily number of prisoners in Australia was 21,187. This was a decrease of 204 (1%) on the December quarter 2001 and an increase of 197 (1%) on the March quarter 2001. The largest increase in the number of prisoners between the March quarter 2001 and the March quarter 2002 occurred in Queensland (218). South Australia recorded the largest proportional increase of 8%, while decreases were recorded in the Australian Capital Territory – including Australian Capital Territory prisoners held in New South Wales prisons – (12%), Western Australia (9%) and the Northern Territory (4%).

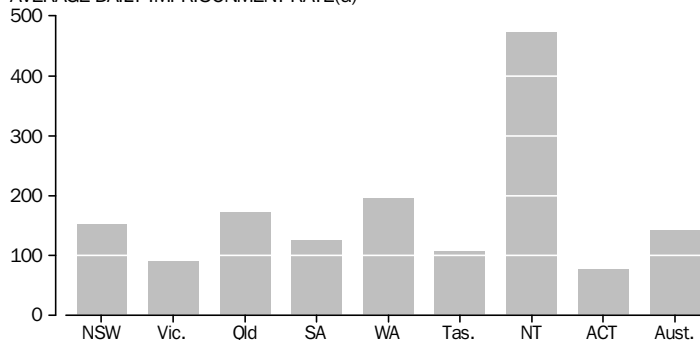
PERSONS IN PRISON CUSTODY, Average daily number—Australia



RATES PER 100,000 ADULTS

Nationally, the average daily imprisonment rate was 143 prisoners per 100,000 adult population during the March quarter 2002, a decrease of less than 1% since the March quarter 2001. While the Northern Territory had the highest imprisonment rate per 100,000 adult population, of 473, this was 6% lower than the March quarter 2001 figure of 502. The next highest rates were recorded by Western Australia and Queensland (196 and 174 prisoners per 100,000 adult population respectively).

AVERAGE DAILY IMPRISONMENT RATE(a)



(a) Rate per 100,000 adult population

SUMMARY OF FINDINGS *continued*

SEX

Of the average daily number of prisoners in Australia during the March quarter 2002, 19,846 (94%) were male and 1,340 (6%) were female. The number of female prisoners increased by 2% between the March quarter 2001 and the March quarter 2002, compared with a 1% increase for male prisoners.

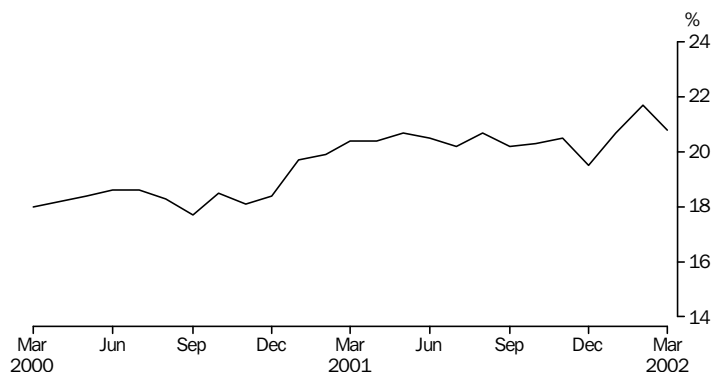
TYPE OF CUSTODY

In the March quarter 2002 the average daily number of prisoners in secure prison custody was 15,517 (73%). The remaining 5,670 prisoners (27%) were held in open prison custody. The highest proportions of prisoners held in secure custody were recorded in Victoria (89%), South Australia (88%) and Queensland (88%). The States and Territories with the lowest proportions of prisoners in secure prison custody were the Australian Capital Territory (including Australian Capital Territory prisoners held in New South Wales prisons) with 43% and New South Wales with 55%. All female prisoners in South Australia, Tasmania and the Northern Territory, and all prisoners in the Australian Capital Territory, were held in secure prison custody.

LEGAL STATUS AND SENTENCE TYPE

Between the March quarters 2001 and 2002 there was a 6% increase in the number of unsentenced prisoners. With the exception of the Northern Territory and the Australian Capital Territory (including Australian Capital Territory prisoners held in New South Wales prisons), all jurisdictions recorded increases in the number of unsentenced prisoners. The largest proportional increase between the March quarters 2001 and 2002 was recorded in Victoria (38%). These increases have resulted in unsentenced prisoners accounting for 21% of all prisoners in the March quarter 2002, compared with 20% in the March quarter 2001. South Australia had the highest proportion of its prisoner population who were unsentenced, at 32%, with the Northern Territory the lowest at 17%.

PERSONS IN PRISON CUSTODY, Proportion unsentenced



The number of sentenced prisoners has decreased nationally by approximately 1% between the March quarters 2001 and 2002. Western Australia recorded the largest proportional decrease in sentenced prisoners of 12%. In contrast, South Australia recorded a 12% increase in the number of sentenced prisoners, Northern Territory recorded an 8% increase and Queensland and Tasmania each recorded a 2% increase.

INDIGENOUS PRISONERS

For the March quarter 2002, the average number of Indigenous prisoners on the first day of the month was 4,152. This was a 4% increase on the March quarter 2001. Indigenous prisoners represented 20% of the total prisoner population in the March quarter 2002.

The rate of imprisonment of Indigenous persons for the March quarter 2002 was 1,710 per 100,000 adult Indigenous population. This was a 1% increase on the rate for the March quarter 2001, and was 15 times the imprisonment rate for non-Indigenous persons. The rate of imprisonment of Indigenous persons increased by 16% in Queensland between the March quarters 2001 and 2002; however the March 2001 rate was relatively low compared to the rates for the June to December quarters 2001. The rate of imprisonment of Indigenous persons in Western Australia decreased by 16% between the March quarters 2001 and 2002.



Further information on the interpretation of statistics on Indigenous persons in prison custody is provided in the Appendix on page 35 of this publication.

PERIODIC DETENTION

Periodic detention is a form of custody only used in New South Wales and the Australian Capital Territory. Prisoners on periodic detention are required to be held in custody for only two consecutive days each week. There was an average daily number of 922 persons in New South Wales and 60 persons in the Australian Capital Territory held in periodic detention during the March quarter 2002. This represents a decrease since the March quarter 2001 for New South Wales of 12% and 23% for the Australian Capital Territory.

1

PERSONS IN PRISON CUSTODY

Period	NSW(a)	Vic.	Qld	SA	WA	Tas.	NT	ACT in		Aust.(a)
								NSW(a)(b)	ACT(c)	
AVERAGE DAILY NUMBER										
1999	7 117	2 945	5 095	1 363	2 903	343	615	129	36	20 416
2000	7 329	3 153	4 848	1 298	3 055	398	633	150	52	20 766
2001	7 656	3 381	4 685	1 391	3 078	367	687	145	62	21 306
2001										
March quarter	7 532	3 322	4 601	1 338	3 101	359	683	155	55	20 990
June quarter	7 708	3 373	4 777	1 380	3 144	351	697	145	58	21 487
September quarter	7 690	3 384	4 627	1 427	3 124	365	672	136	61	21 351
December quarter	7 692	3 442	4 733	1 418	2 945	391	698	146	73	21 391
2002										
March quarter	7 602	3 439	4 819	1 448	2 807	378	653	143	41	21 187
2001										
January	7 466	3 310	4 534	1 314	3 061	358	667	160	54	20 764
February	7 521	3 316	4 605	1 334	3 100	363	695	152	62	20 996
March	7 607	3 338	4 664	1 367	3 141	356	689	154	49	21 212
April	7 640	3 360	4 731	1 379	3 154	356	690	155	66	21 375
May	7 727	3 385	4 784	1 377	3 125	354	698	147	56	21 506
June	7 756	3 373	4 815	1 383	3 153	343	704	134	54	21 580
July	7 684	3 391	4 644	1 406	3 142	345	687	134	55	21 353
August	7 645	3 376	4 595	1 436	3 121	366	668	134	63	21 269
September	7 744	3 385	4 643	1 440	3 109	384	661	140	66	21 432
October	7 819	3 438	4 730	1 419	3 039	384	697	149	69	21 595
November	7 727	3 449	4 736	1 431	2 963	393	699	151	79	21 476
December	7 530	3 440	4 734	1 404	2 833	396	698	138	70	21 105
2002										
January	7 550	3 449	4 755	1 423	2 795	376	656	151	32	21 036
February	7 624	3 419	4 842	1 452	2 805	369	644	141	46	21 201
March	7 634	3 448	4 863	1 470	2 820	388	657	137	44	21 324

(a) Prior to the September quarter 2000, all full-time prisoners sentenced in the ACT were held in NSW prisons. Since the September quarter 2000, some ACT-sentenced fine default only prisoners have been held in the ACT. The ACT in NSW figures are a subset of the NSW figures—see Explanatory notes, paragraph 12.

(b) The figures are a single count taken on a specific day of the month and are not an average of the daily prisoner population for that month.

(c) Refers to unsentenced persons in ACT prison custody and, from the September quarter 2000, may include some sentenced fine default only prisoners.

1

PERSONS IN PRISON CUSTODY *continued*

Period	NSW(a)	Vic.	Qld	SA	WA	Tas.	NT	ACT in		Aust.(a)
								NSW(a)(b)	ACT(c)	
RATE PER 100,000 ADULT POPULATION										
1999	148.1	81.4	193.0	120.0	211.6	96.4	453.9	54.7	15.3	142.8
2000	150.6	85.9	180.3	113.7	219.0	111.7	464.6	64.5	22.3	143.3
2001	155.5	90.7	170.8	121.1	216.8	103.3	502.7	62.0	26.3	145.0
2001										
March quarter	153.7	89.6	169.0	116.8	219.9	100.4	501.8	66.5	23.4	143.7
June quarter	156.8	90.7	174.5	120.1	222.0	97.9	510.6	62.0	24.9	146.5
September quarter	155.9	90.5	168.3	124.1	219.5	103.7	491.0	57.7	26.0	145.1
December quarter	155.4	91.8	171.3	123.1	206.1	111.2	507.6	61.7	30.8	144.8
2002										
March quarter	153.1	91.3	173.5	125.5	195.5	107.3	473.4	60.4	17.2	142.9
2001										
January	152.4	89.3	166.6	114.7	217.1	100.1	490.1	68.3	22.9	142.1
February	153.5	89.5	169.2	116.4	219.9	101.5	510.3	65.1	26.4	143.7
March	155.3	90.0	171.3	119.3	222.8	99.6	505.8	65.9	21.1	145.2
April	155.4	90.3	172.8	120.1	222.7	99.3	505.2	66.2	27.9	145.7
May	157.2	91.0	174.8	119.9	220.7	98.9	511.1	62.5	23.8	146.6
June	157.7	90.7	175.9	120.4	222.7	95.6	515.7	57.2	23.0	147.1
July	155.8	90.7	168.9	122.2	220.8	98.0	501.6	56.9	23.3	145.1
August	155.0	90.3	167.1	124.8	219.3	104.0	488.1	56.7	26.6	144.5
September	157.0	90.5	168.8	125.2	218.4	109.3	483.1	59.6	28.0	145.6
October	158.0	91.6	171.1	123.2	212.7	109.2	506.9	63.0	29.3	146.2
November	156.1	91.9	171.3	124.2	207.3	111.7	508.3	63.7	33.4	145.4
December	152.1	91.7	171.3	121.9	198.3	112.6	507.6	58.5	29.7	142.9
2002										
January	152.0	91.6	171.2	123.3	194.7	106.7	475.7	63.8	13.7	141.9
February	153.5	90.8	174.4	125.8	195.3	104.8	467.5	59.6	19.6	143.0
March	153.7	91.6	175.1	127.4	196.4	110.2	476.5	57.9	18.5	143.8

(a) Prior to the September quarter 2000, all full-time prisoners sentenced in the ACT were held in NSW prisons. Since the September quarter 2000, some ACT-sentenced fine default only prisoners have been held in the ACT. The ACT in NSW figures are a subset of the NSW figures—see Explanatory notes, paragraph 12.

(b) The figures are a single count taken on a specific day of the month and are not an average of the daily prisoner population for that month.

(c) Refers to unsentenced persons in ACT prison custody and, from the September quarter 2000, may include some sentenced fine default only prisoners.

2

PERSONS IN PRISON CUSTODY, By sex and type of prison custody

Prison custody and sex	NSW(a)	Vic.	Qld	SA	WA	Tas.	NT	ACT in		Aust.(a)
								NSW(a)(b)	ACT(c)	
AVERAGE DAILY NUMBER										
Males										
Secure prison custody										
1999	3 744	2 465	3 844	1 100	1 758	235	476	39	33	13 654
2000	3 754	2 631	3 721	1 055	1 862	296	494	41	45	13 858
2001	3 910	2 809	3 690	1 156	1 873	274	528	43	58	14 298
2001										
March quarter	3 858	2 757	3 563	1 112	1 849	267	543	47	49	13 997
June quarter	3 978	2 799	3 680	1 158	1 879	259	530	40	54	14 337
September quarter	3 914	2 819	3 679	1 184	1 925	275	512	40	59	14 366
December quarter	3 891	2 861	3 835	1 168	1 840	293	529	45	69	14 486
2002										
March quarter	3 917	2 870	3 964	1 177	1 806	281	503	39	39	14 556
January	3 890	2 872	3 906	1 159	1 784	275	499	40	30	14 415
February	3 926	2 841	3 980	1 177	1 801	270	492	38	44	14 531
March	3 935	2 894	4 008	1 194	1 832	296	517	38	43	14 719
Open prison custody										
1999	2 953	301	943	188	930	91	113	82	..	5 520
2000	3 199	326	834	172	953	81	123	97	..	5 609
2001	3 251	333	706	152	986	73	141	89	..	5 643
2001										
March quarter	3 196	346	780	147	1 015	73	122	92	..	5 679
June quarter	3 227	331	797	138	1 043	75	149	91	..	5 760
September quarter	3 278	324	650	159	984	70	145	85	..	5 611
December quarter	3 300	332	599	165	904	76	148	90	..	5 525
2002										
March quarter	3 217	325	553	181	807	77	131	95	..	5 291
January	3 196	331	552	174	824	80	137	100	..	5 295
February	3 227	330	553	184	806	79	133	94	..	5 312
March	3 229	314	554	185	791	72	121	90	..	5 267
Total prison custody										
1999	6 697	2 766	4 786	1 288	2 688	326	590	121	33	19 174
2000	6 873	2 957	4 555	1 228	2 815	377	617	138	45	19 466
2001	7 161	3 142	4 396	1 308	2 860	347	669	132	58	19 941
2001										
March quarter	7 054	3 103	4 342	1 259	2 864	340	665	140	49	19 676
June quarter	7 205	3 130	4 476	1 296	2 922	334	679	131	54	20 097
September quarter	7 193	3 143	4 330	1 343	2 909	344	657	124	59	19 977
December quarter	7 191	3 193	4 434	1 333	2 744	369	677	134	69	20 011
2002										
March quarter	7 134	3 195	4 517	1 358	2 613	358	634	133	39	19 846
January	7 086	3 203	4 458	1 333	2 608	355	637	140	30	19 710
February	7 153	3 171	4 533	1 361	2 607	349	625	132	44	19 843
March	7 164	3 208	4 562	1 379	2 622	369	638	128	43	19 986

(a) Prior to the September quarter 2000, all full-time prisoners sentenced in the ACT were held in NSW prisons. Since the September quarter 2000, some ACT-sentenced fine default only prisoners have been held in the ACT. The ACT in NSW figures are a subset of the NSW figures—see Explanatory notes, paragraph 12.

(b) The figures are a single count taken on a specific day of the month and are not an average of the daily prisoner population for that month.

(c) Refers to unsentenced persons in ACT prison custody and, from the September quarter 2000, may include some sentenced fine default only prisoners.

Prison custody and sex	NSW(a)	Vic.	Qld	SA	WA	Tas.	NT	ACT in		Aust.(a)
								NSW(a)(b)	ACT(c)	
AVERAGE DAILY NUMBER										
Females										
Secure prison custody										
1999	277	146	216	74	142	17	25	—	3	901
2000	288	157	231	70	158	22	16	—	7	949
2001	299	189	241	83	139	20	18	—	4	993
2001										
March quarter	296	166	206	79	155	19	19	2	6	947
June quarter	305	193	248	83	144	17	18	—	4	1 013
September quarter	303	197	256	84	135	20	15	—	3	1 013
December quarter	291	200	255	85	123	22	21	—	4	1 000
2002										
March quarter	259	193	260	91	117	20	19	—	2	961
January	253	195	254	90	115	20	19	—	2	949
February	266	195	265	91	120	21	19	—	3	980
March	259	189	262	91	116	19	18	—	1	956
Open prison custody										
1999	144	33	92	..	73	8	..	342
2000	168	39	62	..	82	12	..	351
2001	196	49	48	..	79	12	..	371
2001										
March quarter	182	52	52	..	81	13	..	367
June quarter	197	50	53	..	77	14	..	377
September quarter	194	44	42	..	80	11	..	361
December quarter	210	49	44	..	78	12	..	380
2002										
March quarter	209	52	42	..	77	10	..	379
January	211	51	43	..	72	11	..	377
February	204	53	44	..	77	9	..	378
March	211	51	39	..	82	9	..	383
Total prison custody										
1999	421	179	309	74	215	17	25	8	3	1 242
2000	456	196	293	70	240	22	16	12	7	1 300
2001	495	238	289	83	219	20	18	13	4	1 365
2001										
March quarter	478	218	259	79	237	19	19	16	6	1 314
June quarter	503	243	300	83	222	17	18	14	4	1 390
September quarter	498	241	298	84	215	20	15	12	3	1 374
December quarter	501	249	299	85	201	22	21	12	4	1 380
2002										
March quarter	468	245	302	91	194	20	19	10	2	1 340
January	465	246	297	90	187	20	19	11	2	1 326
February	470	248	309	91	197	21	19	9	3	1 358
March	470	240	301	91	198	19	18	9	1	1 339

(a) Prior to the September quarter 2000, all full-time prisoners sentenced in the ACT were held in NSW prisons. Since the September quarter 2000, some ACT-sentenced fine default only prisoners have been held in the ACT. The ACT in NSW figures are a subset of the NSW figures—see Explanatory notes, paragraph 12.

(b) The figures are a single count taken on a specific day of the month and are not an average of the daily prisoner population for that month.

(c) Refers to unsentenced persons in ACT prison custody and, from the September quarter 2000, may include some sentenced fine default only prisoners.

2

PERSONS IN PRISON CUSTODY, By sex and type of prison custody *continued*

Prison custody and sex	NSW(a)	Vic.	Qld	SA	WA	Tas.	NT	ACT in		Aust. (a)
								NSW(a)(b)	ACT(c)	
AVERAGE DAILY NUMBER										
Persons										
Secure prison custody										
1999	4 021	2 611	4 060	1 174	1 901	252	501	39	36	14 555
2000	4 041	2 788	3 952	1 126	2 020	317	511	41	52	14 807
2001	4 209	2 998	3 931	1 239	2 013	293	546	44	62	15 291
2001										
March quarter	4 154	2 923	3 769	1 191	2 004	286	561	50	55	14 944
June quarter	4 283	2 992	3 927	1 241	2 023	276	548	41	58	15 350
September quarter	4 218	3 015	3 935	1 268	2 060	295	527	40	61	15 378
December quarter	4 182	3 061	4 091	1 253	1 963	315	549	45	73	15 486
2002										
March quarter	4 176	3 063	4 224	1 267	1 923	301	522	39	41	15 517
January	4 143	3 067	4 160	1 249	1 899	295	518	40	32	15 364
February	4 192	3 036	4 245	1 268	1 921	290	511	38	46	15 511
March	4 194	3 083	4 270	1 285	1 948	316	535	38	44	15 675
Open prison custody										
1999	3 097	333	1 035	188	1 003	91	113	90	..	5 861
2000	3 287	365	896	172	1 035	81	123	109	..	5 959
2001	3 447	382	753	152	1 065	73	141	102	..	6 014
2001										
March quarter	3 377	398	832	147	1 096	73	122	106	..	6 046
June quarter	3 425	381	849	138	1 120	75	149	105	..	6 137
September quarter	3 473	369	692	159	1 064	70	145	96	..	5 972
December quarter	3 510	381	643	165	982	76	148	101	..	5 905
2002										
March quarter	3 426	376	595	181	884	77	131	104	..	5 670
January	3 407	382	595	174	897	80	137	111	..	5 672
February	3 431	383	597	184	884	79	133	103	..	5 691
March	3 440	365	593	185	873	72	121	99	..	5 649
Total prison custody										
1999	7 117	2 945	5 095	1 363	2 903	343	615	129	36	20 416
2000	7 329	3 153	4 848	1 298	3 055	398	633	150	52	20 766
2001	7 656	3 381	4 685	1 391	3 078	367	687	145	62	21 306
2001										
March quarter	7 532	3 322	4 601	1 338	3 101	359	683	155	55	20 990
June quarter	7 708	3 373	4 777	1 380	3 144	351	697	145	58	21 487
September quarter	7 690	3 384	4 627	1 427	3 124	365	672	136	61	21 351
December quarter	7 692	3 442	4 733	1 418	2 945	391	698	146	73	21 391
2002										
March quarter	7 602	3 439	4 819	1 448	2 807	378	653	143	41	21 187
January	7 550	3 449	4 755	1 423	2 795	376	656	151	32	21 036
February	7 624	3 419	4 842	1 452	2 805	369	644	141	46	21 201
March	7 634	3 448	4 863	1 470	2 820	388	657	137	44	21 324

(a) Prior to the September quarter 2000, all full-time prisoners sentenced in the ACT were held in NSW prisons. Since the September quarter 2000, some ACT-sentenced fine default only prisoners have been held in the ACT. The ACT in NSW figures are a subset of the NSW figures—see Explanatory notes, paragraph 12.

(b) The figures are a single count taken on a specific day of the month and are not an average of the daily prisoner population for that month.

(c) Refers to unsentenced persons in ACT prison custody and, from the September quarter 2000, may include some sentenced fine default only prisoners.

2

PERSONS IN PRISON CUSTODY, By sex and type of prison custody *continued*

Prison custody and sex	NSW(a)	Vic.	Qld	SA	WA	Tas.	NT	ACT in		Aust.(a)
								NSW(a)(b)	ACT(c)	
RATE PER 100,000 ADULT POPULATION										
Males										
Secure prison custody										
1999	158.4	139.3	293.3	198.2	256.5	135.6	659.6	33.5	28.1	193.8
2000	156.7	146.4	278.8	189.0	267.0	170.4	678.6	35.6	39.1	194.0
2001	161.1	153.7	271.2	205.6	264.0	159.0	724.9	37.0	49.7	197.2
2001										
March quarter	159.8	151.8	263.9	198.4	262.3	153.7	747.4	41.0	42.2	194.2
June quarter	164.2	153.5	271.1	206.2	265.4	148.8	728.8	34.9	47.0	198.2
September quarter	161.0	153.8	269.8	210.4	270.5	161.1	701.5	34.0	50.3	197.8
December quarter	159.4	155.5	279.9	207.2	257.6	172.0	722.6	38.1	59.1	198.7
2002										
March quarter	159.9	155.3	288.0	208.4	251.6	164.4	685.6	33.0	33.2	198.9
January	158.8	155.4	283.8	205.3	248.6	161.0	680.4	34.2	25.9	197.0
February	160.3	153.8	289.2	208.5	250.9	158.0	670.6	32.5	37.3	198.6
March	160.6	156.6	291.2	211.5	255.2	173.6	704.4	32.5	36.7	201.2
Open prison custody										
1999	124.9	17.0	72.0	33.9	135.7	52.8	157.3	70.3	..	78.3
2000	130.2	18.1	62.5	30.8	136.7	46.8	168.5	84.4	..	78.5
2001	133.9	18.3	51.9	27.1	138.9	42.6	193.9	76.9	..	77.9
2001										
March quarter	132.4	19.1	57.7	26.3	144.0	42.0	167.9	80.1	..	78.8
June quarter	133.2	18.2	58.7	24.6	147.3	42.9	204.8	78.5	..	79.6
September quarter	134.8	17.7	47.7	28.3	138.2	40.9	199.4	72.6	..	77.3
December quarter	135.2	18.1	43.7	29.3	126.5	44.6	203.0	76.6	..	75.8
2002										
March quarter	131.3	17.6	40.2	32.0	112.5	45.2	177.9	80.9	..	72.3
January	130.5	17.9	40.1	30.8	114.8	47.0	187.2	85.4	..	72.4
February	131.7	17.9	40.2	32.6	112.3	46.2	181.4	80.3	..	72.6
March	131.8	17.0	40.3	32.8	110.2	42.4	165.5	76.9	..	72.0
Total prison custody										
1999	283.2	156.3	365.2	232.1	392.2	188.4	816.9	103.8	28.1	272.1
2000	286.9	164.5	341.2	219.9	403.7	217.1	847.1	120.1	39.1	272.5
2001	295.0	171.9	323.1	232.7	402.9	201.5	918.9	113.9	49.7	275.1
2001										
March quarter	292.2	170.9	321.6	224.7	406.3	195.6	915.3	121.1	42.2	273.0
June quarter	297.4	171.7	329.8	230.8	412.8	191.7	933.6	113.4	47.0	277.8
September quarter	295.8	171.5	317.5	238.8	408.7	201.9	901.0	106.7	50.3	275.1
December quarter	294.7	173.5	323.6	236.5	384.0	216.6	925.6	114.7	59.1	274.5
2002										
March quarter	291.2	172.9	328.2	240.5	364.0	209.6	863.5	113.9	33.2	271.2
January	289.3	173.4	323.9	236.1	363.4	208.1	867.5	119.6	25.9	269.4
February	292.0	171.6	329.4	241.1	363.2	204.1	852.0	112.7	37.3	271.2
March	292.5	173.6	331.5	244.3	365.4	216.0	869.9	109.3	36.7	273.1

(a) Prior to the September quarter 2000, all full-time prisoners sentenced in the ACT were held in NSW prisons. Since the September quarter 2000, some ACT-sentenced fine default only prisoners have been held in the ACT. The ACT in NSW figures are a subset of the NSW figures—see Explanatory notes, paragraph 12.

(b) The figures are a single count taken on a specific day of the month and are not an average of the daily prisoner population for that month.

(c) Refers to unsentenced persons in ACT prison custody and, from the September quarter 2000, may include some sentenced fine default only prisoners.

2

PERSONS IN PRISON CUSTODY, By sex and type of prison custody *continued*

Prison custody and sex	NSW(a)	Vic.	Qld	SA	WA	Tas.	NT	ACT in		Aust.(a)
								NSW(a)(b)	ACT(c)	
RATE PER 100,000 ADULT POPULATION										
Females										
Secure prison custody										
1999	11.3	7.9	16.3	12.8	20.7	9.2	39.7	—	2.7	12.4
2000	11.6	8.4	17.1	12.1	22.7	11.9	25.9	0.2	5.9	12.9
2001	11.9	10.0	17.4	14.1	19.6	10.7	28.4	0.6	3.3	13.4
2001										
March quarter	11.9	8.8	15.0	13.5	22.0	10.3	29.3	1.9	5.0	12.8
June quarter	12.2	10.2	17.9	14.2	20.4	9.4	28.5	0.2	3.3	13.6
September quarter	12.1	10.3	18.4	14.3	19.0	11.2	23.7	0.3	2.1	13.6
December quarter	11.6	10.5	18.3	14.4	17.2	12.0	32.0	0.1	3.0	13.4
2002										
March quarter	10.3	10.1	18.6	15.4	16.3	11.1	29.3	—	1.5	12.8
January	10.1	10.2	18.1	15.3	16.0	11.2	29.6	—	1.8	12.6
February	10.6	10.2	18.9	15.4	16.7	11.4	29.8	—	2.2	13.0
March	10.3	9.9	18.7	15.4	16.2	10.7	28.7	—	0.6	12.7
Open prison custody										
1999	5.9	1.8	6.9	..	10.6	6.8	..	4.7
2000	6.8	2.1	4.6	..	11.7	10.1	..	4.8
2001	7.9	2.5	3.4	..	11.1	10.5	..	5.0
2001										
March quarter	7.3	2.7	3.8	..	11.5	11.3	..	5.0
June quarter	7.9	2.6	3.8	..	10.9	11.5	..	5.1
September quarter	7.8	2.3	3.0	..	11.3	9.5	..	4.8
December quarter	8.4	2.5	3.1	..	10.9	9.8	..	5.1
2002										
March quarter	8.3	2.7	3.0	..	10.7	8.1	..	5.1
January	8.4	2.7	3.1	..	10.1	9.2	..	5.0
February	8.1	2.8	3.1	..	10.8	7.5	..	5.0
March	8.4	2.7	2.8	..	11.4	7.5	..	5.1
Total prison custody										
1999	17.2	9.7	23.2	12.8	31.3	9.2	39.7	6.8	2.7	17.1
2000	18.5	10.5	21.6	12.1	34.5	11.9	25.9	10.3	5.9	17.7
2001	19.8	12.5	20.9	14.1	30.8	10.7	28.4	11.1	3.3	18.3
2001										
March quarter	19.2	11.5	18.9	13.5	33.5	10.3	29.3	13.2	5.0	17.8
June quarter	20.2	12.8	21.8	14.2	31.3	9.4	28.5	11.7	3.3	18.7
September quarter	19.9	12.6	21.5	14.3	30.3	11.2	23.7	9.8	2.1	18.4
December quarter	19.9	13.0	21.5	14.4	28.1	12.0	32.0	9.9	3.0	18.4
2002										
March quarter	18.6	12.8	21.6	15.4	27.0	11.1	29.3	8.1	1.5	17.9
January	18.5	12.8	21.2	15.3	26.1	11.2	29.6	9.2	1.8	17.7
February	18.7	12.9	22.1	15.4	27.5	11.4	29.8	7.5	2.2	18.1
March	18.7	12.5	21.5	15.4	27.6	10.7	28.7	7.5	0.6	17.8

(a) Prior to the September quarter 2000, all full-time prisoners sentenced in the ACT were held in NSW prisons. Since the September quarter 2000, some ACT-sentenced fine default only prisoners have been held in the ACT. The ACT in NSW figures are a subset of the NSW figures—see Explanatory notes, paragraph 12.

(b) The figures are a single count taken on a specific day of the month and are not an average of the daily prisoner population for that month.

(c) Refers to unsentenced persons in ACT prison custody and, from the September quarter 2000, may include some sentenced fine default only prisoners.

2

PERSONS IN PRISON CUSTODY, By sex and type of prison custody *continued*

Prison custody and sex	NSW(a)	Vic.	Qld	SA	WA	Tas.	NT	ACT in		Aust.(a)
								NSW(a)(b)	ACT(c)	
RATE PER 100,000 ADULT POPULATION										
Persons										
Secure prison custody										
1999	83.6	72.2	153.8	103.4	138.5	70.7	370.1	16.6	15.3	101.8
2000	83.1	75.9	147.0	98.6	144.8	88.9	374.5	17.7	22.3	102.2
2001	85.5	80.4	143.3	107.7	141.8	82.7	399.5	18.6	26.3	104.1
2001										
March quarter	84.8	78.9	138.5	103.9	142.2	80.0	412.2	21.2	23.4	102.3
June quarter	87.1	80.4	143.5	108.1	142.9	77.1	401.6	17.4	24.9	104.6
September quarter	85.5	80.7	143.1	110.2	144.8	83.9	384.8	17.0	26.0	104.5
December quarter	84.5	81.6	148.0	108.7	137.4	89.6	399.6	18.9	30.8	104.8
2002										
March quarter	84.1	81.3	152.1	109.8	133.9	85.4	378.7	16.3	17.2	104.7
January	83.4	81.4	149.8	108.2	132.3	83.8	376.1	16.9	13.7	103.6
February	84.4	80.6	152.9	109.9	133.8	82.4	370.9	16.1	19.6	104.6
March	84.5	81.9	153.8	111.4	135.7	89.7	388.4	16.1	18.5	105.7
Open prison custody										
1999	64.4	9.2	39.2	16.6	73.1	25.7	83.8	38.2	..	41.0
2000	67.6	9.9	33.3	15.1	74.2	22.8	90.0	46.8	..	41.1
2001	70.0	10.2	27.5	13.3	75.0	20.7	103.3	43.3	..	40.9
2001										
March quarter	68.9	10.7	30.6	12.9	77.7	20.4	89.6	45.3	..	41.4
June quarter	69.7	10.2	31.0	12.0	79.1	20.8	109.1	44.6	..	41.8
September quarter	70.4	9.9	25.2	13.8	74.7	19.8	106.2	40.7	..	40.6
December quarter	70.9	10.2	23.2	14.4	68.7	21.6	108.0	42.8	..	40.0
2002										
March quarter	69.0	10.0	21.4	15.7	61.6	21.9	94.7	44.1	..	38.2
January	68.6	10.1	21.4	15.1	62.4	22.8	99.6	46.9	..	38.3
February	69.1	10.2	21.5	15.9	61.5	22.4	96.6	43.5	..	38.4
March	69.3	9.7	21.4	16.0	60.8	20.6	88.1	41.8	..	38.1
Total prison custody										
1999	148.1	81.4	193.0	120.0	211.6	96.4	453.9	54.7	15.3	142.8
2000	150.6	85.9	180.3	113.7	219.0	111.7	464.6	64.5	22.3	143.3
2001	155.5	90.7	170.8	121.1	216.8	103.3	502.7	62.0	26.3	145.0
2001										
March quarter	153.7	89.6	169.0	116.8	219.9	100.4	501.8	66.5	23.4	143.7
June quarter	156.8	90.7	174.5	120.1	222.0	97.9	510.6	62.0	24.9	146.5
September quarter	155.9	90.5	168.3	124.1	219.5	103.7	491.0	57.7	26.0	145.1
December quarter	155.4	91.8	171.3	123.1	206.1	111.2	507.6	61.7	30.8	144.8
2002										
March quarter	153.1	91.3	173.5	125.5	195.5	107.3	473.4	60.4	17.2	142.9
January	152.0	91.6	171.2	123.3	194.7	106.7	475.7	63.8	13.7	141.9
February	153.5	90.8	174.4	125.8	195.3	104.8	467.5	59.6	19.6	143.0
March	153.7	91.6	175.1	127.4	196.4	110.2	476.5	57.9	18.5	143.8

(a) Prior to the September quarter 2000, all full-time prisoners sentenced in the ACT were held in NSW prisons. Since the September quarter 2000, some ACT-sentenced fine default only prisoners have been held in the ACT. The ACT in NSW figures are a subset of the NSW figures—see Explanatory notes, paragraph 12.

(b) The figures are a single count taken on a specific day of the month and are not an average of the daily prisoner population for that month.

(c) Refers to unsentenced persons in ACT prison custody and, from the September quarter 2000, may include some sentenced fine default only prisoners.

3

PERSONS IN PRISON CUSTODY, By legal status and sentence type

Legal status and sentence type	NSW(a)	Vic.	Qld	SA	WA	Tas.	NT	ACT in NSW(a)	ACT(b)	Aust.(a)
NUMBER ON FIRST DAY OF MONTH										
Unsentenced										
1999(c)	1 321	451	616	277	377	56	91	3	41	3 231
2000(c)	1 495	459	702	364	451	73	160	3	54	3 755
2001(c)	1 650	512	913	476	494	61	139	3	65	4 309
2001										
March quarter(c)	1 630	458	875	445	480	60	169	8	63	4 181
June quarter(c)	1 706	535	904	499	515	61	120	3	58	4 398
September quarter(c)	1 643	514	932	496	511	61	130	2	61	4 348
December quarter(c)	1 623	542	939	462	469	62	136	1	76	4 309
2002										
March quarter(c)	1 686	630	950	460	491	66	111	—	46	4 441
January	1 690	632	909	431	459	62	115	—	36	4 334
February	1 710	655	987	469	515	62	111	—	60	4 569
March	1 659	603	954	481	498	74	107	—	43	4 419
Sentenced										
Fine default only										
1999(c)	1	5	234	43	71	21	20	2	..	395
2000(c)	3	3	193	3	55	13	14	—	1	285
2001(c)	2	—	4	2	49	24	20	—	1	104
2001										
March quarter(c)	2	—	12	1	48	20	18	—	1	103
June quarter(c)	4	1	4	3	45	27	20	—	—	103
September quarter(c)	3	—	—	1	56	33	18	1	1	112
December quarter(c)	1	—	1	1	48	17	26	—	2	97
2002										
March quarter(c)	1	1	1	1	41	11	11	—	1	67
January	2	1	2	—	40	12	23	—	1	81
February	—	1	1	2	44	10	6	—	—	64
March	—	—	1	—	39	11	3	—	3	57
Other sentenced										
1999(c)	5 796	2 482	4 213	1 043	2 438	257	497	125	..	16 725
2000(c)	5 842	2 680	3 910	941	2 529	258	459	147	..	16 619
2001(c)	6 030	2 864	3 741	921	2 546	241	529	142	..	16 872
2001										
March quarter(c)	5 890	2 849	3 721	886	2 560	239	490	147	..	16 635
June quarter(c)	6 015	2 846	3 805	890	2 586	230	556	143	..	16 927
September quarter(c)	6 073	2 869	3 700	935	2 568	232	530	134	..	16 907
December quarter(c)	6 143	2 891	3 739	972	2 470	263	539	142	..	17 017
2002										
March quarter(c)	5 915	2 808	3 821	989	2 265	252	537	143	..	16 588
January	5 869	2 836	3 775	955	2 298	244	534	151	..	16 511
February	5 919	2 752	3 776	998	2 228	248	527	141	..	16 448
March	5 957	2 836	3 913	1 015	2 270	265	549	137	..	16 805

(a) Prior to the September quarter 2000, all full-time prisoners sentenced in the ACT were held in NSW prisons. Since the September quarter 2000, some ACT-sentenced fine default only prisoners have been held in the ACT. The ACT in NSW figures are a subset of the NSW figures—see Explanatory notes, paragraph 12.

(b) Refers to unsentenced persons in ACT prison custody and, from the September quarter 2000, may include some sentenced fine default only prisoners.

(c) Figures for the quarter and year for first day of month counts are calculated as a simple average—see Explanatory notes, paragraph 5.

3

PERSONS IN PRISON CUSTODY, By legal status and sentence type *continued*

Legal status and sentence type	NSW(a)	Vic.	Qld	SA	WA	Tas.	NT	ACT in NSW(a)	ACT(b)	Aust.(a)
NUMBER ON FIRST DAY OF MONTH										
Total sentenced										
1999(c)	5 797	2 487	4 447	1 086	2 509	278	517	127	..	17 120
2000(c)	5 845	2 683	4 103	944	2 584	271	473	147	1	16 904
2001(c)	6 033	2 864	3 746	922	2 595	265	549	142	1	16 975
2001										
March quarter(c)	5 892	2 850	3 733	887	2 608	259	508	147	1	16 738
June quarter(c)	6 019	2 847	3 809	893	2 630	257	576	143	—	17 031
September quarter(c)	6 076	2 869	3 700	936	2 624	264	548	135	1	17 018
December quarter(c)	6 145	2 891	3 740	974	2 518	280	564	142	2	17 115
2002										
March quarter(c)	5 916	2 809	3 823	990	2 306	263	547	143	1	16 655
January	5 871	2 837	3 777	955	2 338	256	557	151	1	16 592
February	5 919	2 753	3 777	1 000	2 272	258	533	141	—	16 512
March	5 957	2 836	3 914	1 015	2 309	276	552	137	3	16 862
Total										
1999(c)	7 118	2 939	5 063	1 363	2 886	334	608	129	41	20 351
2000(c)	7 340	3 141	4 804	1 307	3 035	344	633	150	55	20 659
2001(c)	7 683	3 377	4 658	1 398	3 089	326	688	145	66	21 284
2001										
March quarter(c)	7 522	3 308	4 608	1 332	3 089	319	678	155	64	20 919
June quarter(c)	7 724	3 382	4 713	1 392	3 145	319	696	146	58	21 428
September quarter(c)	7 719	3 383	4 632	1 433	3 135	325	678	137	62	21 366
December quarter(c)	7 768	3 433	4 680	1 436	2 987	342	700	143	78	21 424
2002										
March quarter(c)	7 602	3 439	4 773	1 450	2 797	329	658	143	48	21 096
January	7 561	3 469	4 686	1 386	2 797	318	672	151	37	20 926
February	7 629	3 408	4 764	1 469	2 787	320	644	141	60	21 081
March	7 616	3 439	4 868	1 496	2 807	350	659	137	46	21 281

(a) Prior to the September quarter 2000, all full-time prisoners sentenced in the ACT were held in NSW prisons. Since the September quarter 2000, some ACT-sentenced fine default only prisoners have been held in the ACT. The ACT in NSW figures are a subset of the NSW figures—see Explanatory notes, paragraph 12.

(b) Refers to unsentenced persons in ACT prison custody and, from the September quarter 2000, may include some sentenced fine default only prisoners.

(c) Figures for the quarter and year for first day of month counts are calculated as a simple average—see Explanatory notes, paragraph 5.

3

PERSONS IN PRISON CUSTODY, By legal status and sentence type *continued*

Legal status and sentence type	NSW(a)	Vic.	Qld	SA	WA	Tas.	NT	ACT in NSW(a)	ACT(b)	Aust.(a)
RATE PER 100,000 ADULT POPULATION										
Unsentenced										
1999(c)	27.5	12.5	23.4	24.4	27.5	15.8	67.4	0.4	17.5	22.6
2000(c)	30.7	12.5	26.1	31.8	32.3	20.4	117.0	1.5	23.0	25.9
2001(c)	33.5	13.8	33.3	41.4	34.8	17.2	101.4	1.5	27.4	29.3
2001										
March quarter(c)	33.3	12.4	32.1	38.9	34.1	16.7	124.3	3.3	27.1	28.6
June quarter(c)	34.7	14.4	33.0	43.4	36.3	17.1	87.9	1.3	24.6	30.0
September quarter(c)	33.3	13.8	33.9	43.2	35.9	17.3	94.7	0.7	25.9	29.5
December quarter(c)	32.8	14.4	34.0	40.1	32.8	17.7	98.7	0.6	32.1	29.2
2002										
March quarter(c)	34.0	16.7	34.2	39.9	34.2	18.7	80.5	—	19.6	30.0
January	34.0	16.8	32.7	37.3	32.0	17.6	83.4	—	15.2	29.2
February	34.4	17.4	35.5	40.6	35.9	17.6	80.5	—	25.3	30.8
March	33.4	16.0	34.4	41.7	34.7	21.0	77.6	—	18.2	29.8
Sentenced										
Fine default only										
1999(c)	—	0.1	8.8	3.8	5.2	6.0	14.8	0.7	..	2.8
2000(c)	0.1	—	7.2	0.2	3.9	3.7	10.5	—	0.5	2.0
2001(c)	0.1	—	0.2	0.1	3.5	6.8	14.9	0.1	0.5	0.7
2001										
March quarter(c)	—	—	0.5	0.1	3.4	5.7	13.2	—	0.4	0.7
June quarter(c)	0.1	—	0.1	0.2	3.2	7.6	14.6	—	0.1	0.7
September quarter(c)	0.1	—	—	0.1	4.0	9.3	13.1	0.3	0.3	0.8
December quarter(c)	—	—	—	0.1	3.4	4.7	18.7	—	1.0	0.7
2002										
March quarter(c)	—	—	—	0.1	2.9	3.1	7.7	—	0.6	0.5
January	—	—	0.1	—	2.8	3.4	16.7	—	0.4	0.5
February	—	—	—	0.2	3.1	2.8	4.4	—	—	0.4
March	—	—	—	—	2.7	3.1	2.2	—	1.3	0.4
Other sentenced										
1999(c)	120.6	68.6	159.6	91.8	177.7	72.2	366.9	53.2	..	117.0
2000(c)	120.1	73.0	145.4	82.4	181.3	72.2	336.5	63.1	..	114.7
2001(c)	122.4	76.8	136.4	80.1	179.4	67.9	386.6	60.3	..	114.9
2001										
March quarter(c)	120.2	76.9	136.7	77.3	181.6	66.7	360.0	63.0	..	113.9
June quarter(c)	122.3	76.5	139.0	77.5	182.6	64.2	407.0	61.0	..	115.4
September quarter(c)	123.1	76.7	134.5	81.3	180.4	65.9	387.4	57.0	..	114.9
December quarter(c)	124.1	77.1	135.3	84.4	172.9	74.8	391.9	60.1	..	115.2
2002										
March quarter(c)	119.1	74.6	137.6	85.7	157.8	71.6	389.3	60.4	..	111.9
January	118.2	75.3	135.9	82.8	160.1	69.3	387.4	63.8	..	111.4
February	119.2	73.1	136.0	86.5	155.2	70.4	382.3	59.6	..	110.9
March	120.0	75.3	140.9	88.0	158.1	75.2	398.3	57.9	..	113.4

(a) Prior to the September quarter 2000, all full-time prisoners sentenced in the ACT were held in NSW prisons. Since the September quarter 2000, some ACT-sentenced fine default only prisoners have been held in the ACT. The ACT in NSW figures are a subset of the NSW figures—see Explanatory notes, paragraph 12.

(b) Refers to unsentenced persons in ACT prison custody and, from the September quarter 2000, may include some sentenced fine default only prisoners.

(c) Figures for the quarter and year for first day of month counts are calculated as a simple average—see Explanatory notes, paragraph 5.

3

PERSONS IN PRISON CUSTODY, By legal status and sentence type *continued*

Legal status and sentence type	NSW(a)	Vic.	Qld	SA	WA	Tas.	NT	ACT in NSW(a)	ACT(b)	Aust.(a)
RATE PER 100,000 ADULT POPULATION										
Total sentenced										
1999(c)	120.6	68.7	168.4	95.6	182.9	78.2	381.6	54.0	..	119.7
2000(c)	120.2	73.1	152.6	82.6	185.2	76.0	347.1	63.1	0.5	116.7
2001(c)	122.5	76.8	136.5	80.3	182.9	74.7	401.5	60.4	0.5	115.6
2001										
March quarter(c)	120.3	76.9	137.1	77.4	185.0	72.4	373.3	63.0	0.4	114.6
June quarter(c)	122.4	76.5	139.2	77.7	185.8	71.8	421.6	61.0	0.1	116.1
September quarter(c)	123.2	76.7	134.5	81.4	184.4	75.2	400.6	57.3	0.3	115.6
December quarter(c)	124.1	77.1	135.3	84.5	176.2	79.5	410.6	60.1	1.0	115.9
2002										
March quarter(c)	119.1	74.6	137.7	85.8	160.6	74.8	397.1	60.4	0.6	112.3
January	118.2	75.3	136.0	82.8	162.8	72.7	404.1	63.8	0.4	111.9
February	119.2	73.1	136.0	86.7	158.2	73.3	386.7	59.6	—	111.4
March	120.0	75.3	140.9	88.0	160.8	78.4	400.4	57.9	1.3	113.7
Total										
1999(c)	148.1	81.2	191.8	120.1	210.4	94.0	449.1	55.1	17.5	142.4
2000(c)	150.9	85.6	178.7	114.5	217.6	96.4	464.1	64.6	23.5	142.6
2001(c)	156.0	90.5	169.8	121.7	217.6	92.0	502.9	61.8	27.9	144.9
2001										
March quarter(c)	153.5	89.2	169.3	116.3	219.0	89.1	497.6	66.3	27.5	143.2
June quarter(c)	157.1	90.9	172.2	121.2	222.1	89.0	509.5	62.2	24.7	146.1
September quarter(c)	156.5	90.5	168.4	124.6	220.3	92.5	495.3	58.0	26.2	145.2
December quarter(c)	156.9	91.5	169.3	124.7	209.0	97.3	509.3	60.6	33.1	145.0
2002										
March quarter(c)	153.1	91.3	171.9	125.7	194.8	93.5	477.6	60.4	20.1	142.3
January	152.3	92.1	168.7	120.1	194.8	90.3	487.5	63.8	15.6	141.2
February	153.6	90.5	171.5	127.3	194.1	90.9	467.2	59.6	25.3	142.2
March	153.4	91.3	175.3	129.6	195.5	99.4	478.1	57.9	19.4	143.5

(a) Prior to the September quarter 2000, all full-time prisoners sentenced in the ACT were held in NSW prisons. Since the September quarter 2000, some ACT-sentenced fine default only prisoners have been held in the ACT. The ACT in NSW figures are a subset of the NSW figures—see Explanatory notes, paragraph 12.

(b) Refers to unsentenced persons in ACT prison custody and, from the September quarter 2000, may include some sentenced fine default only prisoners.

(c) Figures for the quarter and year for first day of month counts are calculated as a simple average—see Explanatory notes, paragraph 5.

4

SENTENCED RECEPTIONS INTO PRISON CUSTODY, By type of sentence

Sentence type	NSW(a)	Vic.(b)	Qld	SA	WA	Tas.	NT	ACT in NSW(a)	ACT	Aust.(a)
NUMBER										
Fine default only										
1999	44	47	4 696	1 712	644	267	939	3	..	8 349
2000	75	29	3 290	130	537	162	378	—	41	4 642
2001	79	8	69	50	757	333	358	—	72	1 726
2001										
March quarter	18	—	29	16	188	64	93	—	11	419
June quarter	18	4	18	9	135	119	84	—	18	405
September quarter	20	—	13	11	258	100	83	1	21	506
December quarter	23	4	9	14	176	50	98	1	22	396
2002										
March quarter	16	1	12	5	131	33	—	1	21	219
January	6	—	4	2	56	12	—	—	11	91
February	5	—	3	2	35	10	—	1	7	62
March	5	1	5	1	40	11	—	—	3	66
Other sentenced										
1999	8 293	3 959	10 854	1 537	3 373	610	896	115	..	29 522
2000	7 917	4 012	8 872	1 156	3 552	588	768	—	..	26 865
2001	7 895	3 856	6 590	1 261	3 253	475	709	144	..	24 039
2001										
March quarter	1 924	899	1 555	278	892	100	184	44	..	5 832
June quarter	2 133	1 021	1 566	321	851	118	209	31	..	6 219
September quarter	2 011	995	1 671	348	833	118	146	37	..	6 122
December quarter	1 827	941	1 798	314	677	139	170	32	..	5 866
2002										
March quarter	1 957	925	1 891	287	720	111	162	20	..	6 053
January	611	215	527	99	200	23	40	1	..	1 715
February	653	368	731	104	265	36	66	10	..	2 223
March	693	342	633	84	255	52	56	9	..	2 115
Total sentenced										
1999	8 337	4 006	15 550	3 249	4 017	877	1 835	118	..	37 871
2000	7 992	4 041	12 162	1 286	4 089	750	1 146	—	41	31 507
2001	7 974	3 864	6 659	1 311	4 010	808	1 067	146	72	25 765
2001										
March quarter	1 942	899	1 584	294	1 080	164	277	44	11	6 251
June quarter	2 151	1 025	1 584	330	986	237	293	31	18	6 624
September quarter	2 031	995	1 684	359	1 091	218	229	38	21	6 628
December quarter	1 850	945	1 807	328	853	189	268	33	22	6 262
2002										
March quarter	1 973	926	1 903	292	851	144	162	21	21	6 272
January	617	215	531	101	256	35	40	1	11	1 806
February	658	368	734	106	300	46	66	11	7	2 285
March	698	343	638	85	295	63	56	9	3	2 181

(a) Prior to the September quarter 2000, all full-time prisoners sentenced in the ACT were held in NSW prisons. Since the September quarter 2000, some ACT-sentenced fine default only prisoners have been held in the ACT. The ACT in NSW figures are a subset of the NSW figures—see Explanatory notes, paragraph 12.

(b) Victorian figures do not include prisoners whose status changed from unsentenced to sentenced during the period.

5

INDIGENOUS PERSONS IN PRISON CUSTODY, By sex(a)(b)(c)

Sex	NSW(d)(e)	Vic.	Qld	SA	WA	Tas.	NT	ACT in NSW(d)(e)	ACT(f)	Aust.(d)(e)
NUMBER ON FIRST DAY OF MONTH										
Males										
1999(g)	n.a.	115	1 044	191	883	36	430	n.a.	6	n.a.
2000(g)	1 032	124	999	185	881	42	386	7	6	3 656
2001(g)	1 077	132	1 005	212	923	41	416	8	9	3 814
2001										
March quarter(g)	1 026	135	907	210	916	39	418	9	7	3 668
June quarter(g)	1 077	135	1 004	215	961	38	424	9	7	3 861
September quarter(g)	1 085	129	1 043	210	950	42	413	6	10	3 882
December quarter(g)	1 122	128	1 064	214	864	45	408	9	10	3 855
2002										
March quarter(g)	1 119	136	1 078	226	803	54	392	11	3	3 811
January	1 113	132	1 059	226	803	53	401	12	—	3 787
February	1 113	136	1 071	228	808	52	378	11	5	3 791
March	1 130	140	1 105	224	798	57	396	10	4	3 854
Females										
1999(g)	n.a.	8	71	14	94	2	17	n.a.	1	n.a.
2000(g)	111	11	76	13	95	1	11	3	1	319
2001(g)	134	14	79	17	96	2	11	3	1	354
2001										
March quarter(g)	131	12	67	17	103	1	12	3	3	347
June quarter(g)	137	14	84	17	97	2	12	3	1	364
September quarter(g)	126	15	80	17	97	3	9	2	—	347
December quarter(g)	142	15	82	18	88	3	11	2	—	360
2002										
March quarter(g)	127	19	86	22	73	2	12	2	1	341
January	125	16	86	20	72	1	10	2	—	330
February	127	20	86	24	72	2	13	2	1	345
March	128	20	87	21	76	2	13	3	1	348
Persons										
1999(g)	n.a.	122	1 116	205	977	37	447	n.a.	7	n.a.
2000(g)	1 143	134	1 075	199	977	43	398	10	6	3 974
2001(g)	1 211	146	1 083	230	1 019	43	427	11	10	4 168
2001										
March quarter(g)	1 157	147	974	227	1 019	41	430	12	10	4 005
June quarter(g)	1 214	150	1 088	232	1 057	40	436	12	8	4 224
September quarter(g)	1 211	143	1 123	227	1 047	44	422	9	10	4 228
December quarter(g)	1 264	143	1 147	232	952	48	419	12	10	4 215
2002										
March quarter(g)	1 245	155	1 165	248	876	56	404	13	4	4 152
January	1 238	148	1 145	246	875	54	411	14	—	4 117
February	1 240	156	1 157	252	880	54	391	13	6	4 136
March	1 258	160	1 192	245	874	59	409	13	5	4 202

(a) Some rates and ratios in this table have not been published—see Explanatory notes, paragraph 21.

(b) Persons in custody are asked their Indigenous status during reception into custody—see Explanatory notes, paragraphs 10–11.

(c) See Appendix—Interpretation of Indigenous Statistics.

(d) Numbers of Indigenous persons for NSW prior to September 1999 are unavailable—see Explanatory notes, paragraph 9.

(e) Prior to the September quarter 2000, all full-time prisoners sentenced in the ACT were held in NSW prisons. Since the September quarter 2000, some ACT-sentenced fine default only prisoners have been held in the ACT. The ACT in NSW figures are a subset of the NSW figures—see Explanatory notes, paragraph 12.

(f) Refers to unsentenced persons in ACT prison custody and, from the September quarter 2000, may include some sentenced fine default only prisoners.

(g) Figures for the quarter and year for first day of the month counts are calculated as a simple average—see Explanatory notes, paragraph 5.

Sex	NSW(d)(e)	Vic.	Qld	SA	WA	Tas.	NT	ACT in NSW(d)(e)	ACT(f)	Aust.(d)(e)
RATE PER 100,000 ADULT INDIGENOUS POPULATION										
Males										
1999(g)	n.a.	1 727.9	3 504.6	3 178.8	5 662.1	n.p.	2 772.1	n.a.	n.p.	n.a.
2000(g)	3 390.3	1 814.2	3 228.3	3 024.9	5 489.3	n.p.	2 461.2	n.p.	n.p.	3 278.1
2001(g)	3 447.4	1 889.9	3 154.6	3 395.5	5 611.2	n.p.	2 581.9	n.p.	n.p.	3 335.6
2001										
March quarter(g)	3 282.9	1 937.7	2 847.4	3 359.5	5 568.1	n.p.	2 649.4	n.p.	n.p.	3 205.7
June quarter(g)	3 446.1	1 942.5	3 154.1	3 434.1	5 841.7	n.p.	2 683.1	n.p.	n.p.	3 383.3
September quarter(g)	3 471.7	1 846.8	3 274.5	3 364.8	5 778.9	n.p.	2 511.8	n.p.	n.p.	3 388.4
December quarter(g)	3 589.0	1 832.4	3 342.5	3 423.5	5 255.9	n.p.	2 483.4	n.p.	n.p.	3 365.1
2002										
March quarter(g)	3 489.5	1 905.0	3 297.7	3 546.2	4 767.6	n.p.	2 416.2	n.p.	n.p.	3 261.4
January	3 471.8	1 849.0	3 238.5	3 546.2	4 767.6	n.p.	2 473.8	n.p.	n.p.	3 241.2
February	3 471.8	1 905.0	3 275.2	3 577.6	4 797.2	n.p.	2 331.9	n.p.	n.p.	3 244.6
March	3 524.9	1 961.1	3 379.2	3 514.8	4 737.9	n.p.	2 442.9	n.p.	n.p.	3 298.5
Females										
1999(g)	n.a.	n.p.	218.8	211.3	566.2	n.p.	100.4	n.a.	n.p.	n.a.
2000(g)	332.5	148.6	225.5	193.4	557.8	n.p.	68.8	n.p.	n.p.	264.7
2001(g)	393.9	195.0	226.8	244.6	548.5	n.p.	65.8	n.p.	n.p.	287.4
2001										
March quarter(g)	384.3	167.1	194.5	243.4	588.9	n.p.	72.4	n.p.	n.p.	281.6
June quarter(g)	402.0	199.6	242.7	238.7	550.9	n.p.	72.4	n.p.	n.p.	295.4
September quarter(g)	370.6	204.3	232.1	238.7	552.8	n.p.	52.4	n.p.	n.p.	280.7
December quarter(g)	418.7	208.9	237.8	257.5	501.5	n.p.	65.9	n.p.	n.p.	291.8
2002										
March quarter(g)	364.0	256.4	242.9	295.5	408.2	n.p.	70.8	n.p.	n.p.	270.9
January	359.2	219.8	242.0	272.8	400.8	n.p.	59.0	n.p.	n.p.	262.1
February	364.9	274.7	242.0	327.4	400.8	n.p.	76.7	n.p.	n.p.	274.0
March	367.8	274.7	244.8	286.5	423.0	n.p.	76.7	n.p.	n.p.	276.4
Persons										
1999(g)	n.a.	900.7	1 791.2	1 613.2	3 030.2	412.8	1 402.7	n.a.	n.p.	n.a.
2000(g)	1 794.3	966.9	1 663.6	1 521.4	2 945.2	464.0	1 234.7	n.p.	n.p.	1 713.7
2001(g)	1 856.4	1 029.7	1 629.6	1 717.6	2 997.8	460.8	1 294.2	n.p.	n.p.	1 754.0
2001										
March quarter(g)	1 772.6	1 039.1	1 465.6	1 700.1	2 997.8	424.7	1 329.2	n.p.	n.p.	1 688.3
June quarter(g)	1 860.0	1 057.9	1 637.6	1 732.5	3 110.5	414.2	1 345.6	n.p.	n.p.	1 780.9
September quarter(g)	1 855.9	1 013.2	1 689.8	1 700.1	3 081.1	482.1	1 254.4	n.p.	n.p.	1 776.1
December quarter(g)	1 937.1	1 008.5	1 725.4	1 737.5	2 801.6	522.0	1 247.5	n.p.	n.p.	1 770.7
2002										
March quarter(g)	1 862.7	1 072.7	1 706.6	1 807.3	2 517.5	590.4	1 217.5	n.p.	n.p.	1 710.4
January	1 851.7	1 026.4	1 677.8	1 795.1	2 513.7	572.8	1 239.6	n.p.	n.p.	1 696.1
February	1 854.7	1 081.9	1 695.4	1 838.9	2 528.1	572.8	1 179.3	n.p.	n.p.	1 703.9
March	1 881.6	1 109.6	1 746.7	1 787.8	2 510.8	625.8	1 233.6	n.p.	n.p.	1 731.1

(a) Some rates and ratios in this table have not been published—see Explanatory notes, paragraph 21.

(b) Persons in custody are asked their Indigenous status during reception into custody—see Explanatory Notes, paragraphs 10–11.

(c) See Appendix—Interpretation of Indigenous Statistics.

(d) Numbers of Indigenous persons for NSW prior to September 1999 are unavailable—see Explanatory notes, paragraph 9.

(e) Prior to the September quarter 2000, all full-time prisoners sentenced in the ACT were held in NSW prisons. Since the September quarter 2000, some ACT-sentenced fine default only prisoners have been held in the ACT. The ACT in NSW figures are a subset of the NSW figures—see Explanatory notes, paragraph 12.

(f) Refers to unsentenced persons in ACT prison custody and, from the September quarter 2000, may include some sentenced fine default only prisoners.

(g) Figures for the quarter and year for first day of the month counts are calculated as a simple average—see Explanatory notes, paragraph 5.

Sex	NSW(d)(e)	Vic.	Qld	SA	WA	Tas.	ACT in		ACT(f)	Aust.(d)(e)
							NT	NSW(d)(e)		
RATIO OF INDIGENOUS TO NON-INDIGENOUS RATES OF IMPRISONMENT										
Males										
1999(g)	n.a.	11.5	12.1	15.9	21.2	n.p.	10.4	n.a.	n.p.	n.a.
2000(g)	13.7	11.5	12.0	15.9	19.5	n.p.	6.1	n.p.	n.p.	14.7
2001(g)	13.5	11.5	12.5	17.1	20.0	n.p.	5.8	n.p.	n.p.	14.8
2001										
March quarter(g)	13.0	11.9	10.9	17.8	19.8	n.p.	6.2	n.p.	n.p.	14.2
June quarter(g)	13.4	11.7	12.2	17.4	20.6	n.p.	6.0	n.p.	n.p.	14.9
September quarter(g)	13.6	11.2	13.3	16.4	20.4	n.p.	5.7	n.p.	n.p.	15.0
December quarter(g)	14.1	11.0	13.5	16.8	19.1	n.p.	5.2	n.p.	n.p.	14.9
2002										
March quarter(g)	14.0	11.4	13.1	17.4	18.5	n.p.	5.6	n.p.	n.p.	14.7
January	14.0	11.0	13.1	18.4	18.5	n.p.	5.6	n.p.	n.p.	14.7
February	13.9	11.6	13.0	17.4	18.8	n.p.	5.4	n.p.	n.p.	14.6
March	14.2	11.8	13.1	16.6	18.3	n.p.	5.8	n.p.	n.p.	14.8
Females										
1999(g)	n.a.	n.p.	12.2	20.7	32.0	n.p.	6.8	n.a.	n.p.	n.a.
2000(g)	23.4	15.0	14.1	19.4	26.9	n.p.	6.5	n.p.	n.p.	19.6
2001(g)	26.4	16.6	14.7	22.1	30.9	n.p.	4.8	n.p.	n.p.	20.8
2001										
March quarter(g)	27.3	15.4	13.8	24.4	30.4	n.p.	6.0	n.p.	n.p.	21.4
June quarter(g)	26.3	16.8	15.5	20.8	29.7	n.p.	5.4	n.p.	n.p.	21.0
September quarter(g)	24.1	17.1	14.4	21.1	33.3	n.p.	3.5	n.p.	n.p.	20.0
December quarter(g)	28.0	16.9	15.1	22.1	30.1	n.p.	4.2	n.p.	n.p.	20.9
2002										
March quarter(g)	26.2	22.4	15.4	25.4	24.6	n.p.	4.2	n.p.	n.p.	20.2
January	26.1	18.7	15.4	24.8	25.0	n.p.	3.5	n.p.	n.p.	19.7
February	25.9	24.0	15.8	28.4	24.0	n.p.	4.6	n.p.	n.p.	20.5
March	26.8	24.5	15.2	23.2	24.9	n.p.	4.6	n.p.	n.p.	20.4
Persons										
1999(g)	n.a.	11.5	11.7	15.6	21.3	4.8	9.1	n.a.	n.p.	n.a.
2000(g)	13.9	11.8	11.7	15.5	19.5	5.4	5.5	n.p.	n.p.	14.7
2001(g)	14.0	11.8	12.2	16.7	20.1	5.6	5.2	n.p.	n.p.	14.8
2001										
March quarter(g)	13.5	12.1	10.7	17.4	19.9	5.3	5.6	n.p.	n.p.	14.3
June quarter(g)	13.9	12.1	12.1	17.0	20.6	5.2	5.4	n.p.	n.p.	14.9
September quarter(g)	13.9	11.6	12.9	16.0	20.5	5.9	5.1	n.p.	n.p.	15.0
December quarter(g)	14.5	11.5	13.2	16.4	19.2	6.1	4.6	n.p.	n.p.	15.0
2002										
March quarter(g)	14.4	12.3	12.8	17.1	18.4	7.4	5.0	n.p.	n.p.	14.7
January	14.3	11.6	12.8	18.0	18.3	7.4	5.0	n.p.	n.p.	14.7
February	14.2	12.5	12.7	17.2	18.6	7.4	4.9	n.p.	n.p.	14.7
March	14.5	12.7	12.9	16.3	18.2	7.4	5.2	n.p.	n.p.	14.8

(a) Some rates and ratios in this table have not been published—see Explanatory notes, paragraph 21.

(b) Persons in custody are asked their Indigenous status during reception into custody—see Explanatory notes paragraphs 10–11.

(c) See Appendix—Interpretation of Indigenous Statistics.

(d) Numbers of Indigenous persons for NSW prior to September 1999 are unavailable—see Explanatory notes, paragraph 9.

(e) Prior to the September quarter 2000, all full-time prisoners sentenced in the ACT were held in NSW prisons. Since the September quarter 2000, some ACT-sentenced fine default only prisoners have been held in the ACT. The ACT in NSW figures are a subset of the NSW figures—see Explanatory notes, paragraph 12.

(f) Refers to unsentenced persons in ACT prison custody and, from the September quarter 2000, may include some sentenced fine default only prisoners.

(g) Figures for the quarter and year for first day of the month counts are calculated as a simple average—see Explanatory notes, paragraph 5.

Legal status and sentence type	NSW(d)(e)	Vic.	Qld	SA	WA	Tas.	NT	ACT in NSW(d)(e)	ACT(f)	Aust.(d)(e)
NUMBER ON FIRST DAY OF MONTH										
Unsentenced										
1999(g)	n.a.	24	124	52	124	8	53	n.a.	7	n.a.
2000(g)	214	27	154	66	133	8	69	—	6	676
2001(g)	250	32	173	85	159	12	86	1	10	807
2001										
March quarter(g)	236	30	155	87	161	7	94	1	10	780
June quarter(g)	264	35	170	91	173	10	79	1	8	831
September quarter(g)	242	30	181	83	157	14	80	—	10	798
December quarter(g)	258	32	186	81	143	16	91	—	10	818
2002										
March quarter(g)	282	41	201	97	150	14	78	—	3	867
January	286	40	197	103	143	12	84	—	—	865
February	277	43	204	97	158	12	75	—	6	872
March	282	41	202	92	150	18	75	—	4	864
Sentenced										
Fine default only										
1999(g)	n.a.	—	54	9	34	1	17	n.a.	..	n.a.
2000(g)	1	—	43	1	24	—	11	—	—	81
2001(g)	—	—	—	—	30	1	15	—	—	47
2001										
March quarter(g)	—	—	—	—	26	1	16	—	—	44
June quarter(g)	—	—	—	—	24	—	14	—	—	40
September quarter(g)	1	—	—	—	40	1	14	—	—	57
December quarter(g)	—	—	—	—	31	—	14	—	—	45
2002										
March quarter(g)	—	—	—	—	25	—	5	—	—	31
January	—	—	—	—	25	—	11	—	—	36
February	—	—	—	—	27	—	5	—	—	32
March	—	—	1	—	23	—	—	—	1	25
Other sentenced										
1999(g)	n.a.	98	937	144	819	29	378	n.a.	..	n.a.
2000(g)	928	107	878	132	819	35	318	10	..	3 217
2001(g)	961	114	910	144	830	31	326	11	..	3 315
2001										
March quarter(g)	920	117	819	140	832	32	320	11	..	3 181
June quarter(g)	949	114	918	140	860	30	342	11	..	3 353
September quarter(g)	968	113	942	144	850	29	327	9	..	3 374
December quarter(g)	1 006	111	960	151	778	32	314	12	..	3 352
2002										
March quarter(g)	964	113	963	150	701	42	320	13	..	3 254
January	952	108	948	143	707	42	316	14	..	3 216
February	963	113	953	155	695	42	311	13	..	3 232
March	976	119	989	153	701	41	334	13	..	3 313

(a) Some rates in this table have not been published—see Explanatory notes, paragraph 21.

(b) Persons in custody are asked their Indigenous status during reception into custody—see Explanatory notes, paragraphs 10–11.

(c) See Appendix—Interpretation of Indigenous Statistics.

(d) Numbers of Indigenous persons for NSW prior to September 1999 are unavailable—see Explanatory notes, paragraph 9.

(e) Prior to the September quarter 2000, all full-time prisoners sentenced in the ACT were held in NSW prisons. Since the September quarter 2000, some ACT-sentenced fine default only prisoners have been held in the ACT. The ACT in NSW figures are a subset of the NSW figures—see Explanatory notes, paragraph 12.

(f) Refers to unsentenced persons in ACT prison custody and, from the September quarter 2000, may include some sentenced fine default only prisoners.

(g) Figures for the quarter and year for first day of the month counts are calculated as a simple average—see Explanatory notes, paragraph 5.

Legal status and sentence type	NSW(d)(e)	Vic.	Qld	SA	WA	Tas.	NT	ACT in NSW(d)(e)	ACT(f)	Aust.(d)(e)
NUMBER ON FIRST DAY OF MONTH										
Total sentenced										
1999(g)	n.a.	98	991	153	853	30	394	n.a.	..	n.a.
2000(g)	929	107	921	132	844	36	329	10	—	3 298
2001(g)	961	114	910	144	860	32	341	11	—	3 361
2001										
March quarter(g)	920	117	819	141	858	33	336	11	—	3 225
June quarter(g)	949	114	919	140	884	30	356	11	—	3 393
September quarter(g)	969	113	942	145	891	30	342	9	—	3 431
December quarter(g)	1 006	111	960	151	809	32	328	12	—	3 397
2002										
March quarter(g)	964	113	964	150	726	42	326	13	—	3 285
January	952	108	948	143	732	42	327	14	—	3 252
February	963	113	953	155	722	42	316	13	—	3 264
March	976	119	990	153	724	41	334	13	1	3 338
Total										
1999(g)	n.a.	122	1 116	205	977	37	447	n.a.	7	n.a.
2000(g)	1 143	134	1 075	199	977	43	398	10	6	3 974
2001(g)	1 211	146	1 083	230	1 019	43	427	11	10	4 168
2001										
March quarter(g)	1 157	147	974	227	1 019	41	430	12	10	4 005
June quarter(g)	1 214	150	1 088	232	1 057	40	436	12	8	4 224
September quarter(g)	1 211	143	1 123	227	1 047	44	422	9	10	4 228
December quarter(g)	1 264	143	1 147	232	952	48	419	12	10	4 215
2002										
March quarter(g)	1 245	155	1 165	248	876	56	404	13	4	4 152
January	1 238	148	1 145	246	875	54	411	14	—	4 117
February	1 240	156	1 157	252	880	54	391	13	6	4 136
March	1 258	160	1 192	245	874	59	409	13	5	4 202

(a) Some rates in this table have not been published—see Explanatory notes, paragraph 21.

(b) Persons in custody are asked their Indigenous status during reception into custody—see Explanatory notes, paragraphs 10–11.

(c) See Appendix—Interpretation of Indigenous Statistics.

(d) Numbers of Indigenous persons for NSW prior to September 1999 are unavailable—see Explanatory notes paragraph 9.

(e) Prior to the September quarter 2000, all full-time prisoners sentenced in the ACT were held in NSW prisons. Since the September quarter 2000, some ACT-sentenced fine default only prisoners have been held in the ACT. The ACT in NSW figures are a subset of the NSW figures—see Explanatory notes, paragraph 12.

(f) Refers to unsentenced persons in ACT prison custody and, from the September quarter 2000, may include some sentenced fine default only prisoners.

(g) Figures for the quarter and year for first day of the month counts are calculated as a simple average—see Explanatory notes, paragraph 5.

Legal status and sentence type	NSW(d)(e)	Vic.	Qld	SA	WA	Tas.	NT	ACT in NSW(d)(e)	ACT(f)	Aust.(d)(e)
RATES PER 100,000 ADULT INDIGENOUS POPULATION										
Unsentenced										
1999(g)	n.a.	175.2	199.4	408.1	384.5	n.p.	165.3	n.a.	n.p.	n.a.
2000(g)	336.0	195.5	238.0	508.4	400.9	n.p.	213.7	n.p.	n.p.	291.7
2001(g)	383.7	225.0	260.3	638.8	466.8	125.0	261.5	n.p.	n.p.	339.5
2001										
March quarter(g)	362.2	209.7	232.7	648.1	474.6	n.p.	291.4	n.p.	n.p.	328.8
June quarter(g)	405.1	249.8	255.3	683.0	509.9	100.9	245.0	n.p.	n.p.	350.5
September quarter(g)	371.4	214.4	272.8	618.2	460.9	152.2	238.0	n.p.	n.p.	335.1
December quarter(g)	395.9	226.2	280.4	605.7	421.7	170.4	271.7	n.p.	n.p.	343.6
2002										
March quarter(g)	421.3	286.7	294.5	710.3	431.9	148.5	235.3	n.p.	n.p.	357.2
January	427.8	277.4	288.7	751.6	410.8	127.3	253.3	n.p.	n.p.	356.4
February	414.3	298.2	298.9	707.8	453.9	127.3	226.2	n.p.	n.p.	359.2
March	421.8	284.3	296.0	671.3	430.9	190.9	226.2	n.p.	n.p.	355.9
Sentenced										
Fine default only										
1999(g)	n.a.	n.p.	87.1	n.p.	105.9	n.p.	52.6	n.a.	..	n.a.
2000(g)	n.p.	n.p.	66.4	n.p.	73.1	n.p.	35.6	n.p.	n.p.	34.7
2001(g)	n.p.	n.p.	n.p.	n.p.	89.3	n.p.	44.5	n.p.	n.p.	19.6
2001										
March quarter(g)	n.p.	n.p.	n.p.	n.p.	76.5	n.p.	49.4	n.p.	n.p.	18.4
June quarter(g)	n.p.	n.p.	n.p.	n.p.	71.6	n.p.	44.3	n.p.	n.p.	16.9
September quarter(g)	n.p.	n.p.	n.p.	n.p.	118.7	n.p.	42.6	n.p.	n.p.	23.9
December quarter(g)	n.p.	n.p.	n.p.	n.p.	90.2	n.p.	41.6	n.p.	n.p.	19.0
2002										
March quarter(g)	n.p.	n.p.	n.p.	n.p.	71.8	n.p.	16.1	n.p.	n.p.	12.8
January	n.p.	n.p.	n.p.	n.p.	71.8	n.p.	33.2	n.p.	n.p.	14.8
February	n.p.	n.p.	n.p.	n.p.	77.6	n.p.	n.p.	n.p.	n.p.	13.2
March	n.p.	n.p.	n.p.	n.p.	66.1	n.p.	n.p.	n.p.	n.p.	10.3
Other sentenced										
1999(g)	n.a.	725.5	1 504.7	1 134.8	2 539.8	321.2	1 185.2	n.a.	..	n.a.
2000(g)	1 457.4	770.2	1 359.2	1 007.9	2 471.2	378.3	985.5	n.p.	..	1 387.3
2001(g)	1 472.4	804.1	1 368.9	1 077.5	2 441.8	327.7	988.2	n.p.	..	1 394.9
2001										
March quarter(g)	1 410.5	829.4	1 232.3	1 049.5	2 446.7	337.6	988.4	n.p.	..	1 341.0
June quarter(g)	1 454.4	805.8	1 381.8	1 049.5	2 529.0	309.8	1 056.3	n.p.	..	1 413.6
September quarter(g)	1 483.5	798.8	1 416.9	1 079.4	2 501.6	315.4	973.8	n.p.	..	1 417.1
December quarter(g)	1 541.2	782.3	1 444.5	1 131.7	2 289.8	348.0	934.1	n.p.	..	1 408.0
2002										
March quarter(g)	1 441.4	786.0	1 411.6	1 097.0	2 013.8	441.9	966.1	n.p.	..	1 340.4
January	1 423.9	749.0	1 389.1	1 043.5	2 031.1	445.5	953.1	n.p.	..	1 324.9
February	1 440.4	783.7	1 396.5	1 131.1	1 996.6	445.5	938.0	n.p.	..	1 331.5
March	1 459.8	825.3	1 449.2	1 116.5	2 013.8	434.9	1 007.4	n.p.	..	1 364.9

(a) Some rates in this table have not been published—see Explanatory notes, paragraph 21.

(b) Persons in custody are asked their Indigenous status during reception into custody—see Explanatory notes paragraphs 10–11.

(c) See Appendix—Interpretation of Indigenous Statistics.

(d) Numbers of Indigenous persons for NSW prior to September 1999 are unavailable—see Explanatory notes, paragraph 9.

(e) Prior to the September quarter 2000, all full-time prisoners sentenced in the ACT were held in NSW prisons. Since the September quarter 2000, some ACT-sentenced fine default only prisoners have been held in the ACT. The ACT in NSW figures are a subset of the NSW figures—see Explanatory notes, paragraph 12.

(f) Refers to unsentenced persons in ACT prison custody and, from the September quarter 2000, may include some sentenced fine default only prisoners.

(g) Figures for the quarter and year for first day of the month counts are calculated on a simple average—see Explanatory notes, paragraph 5.

6

INDIGENOUS PERSONS IN PRISON CUSTODY, By legal status and sentence type(a)(b)(c) *continued*

Legal status and sentence type	NSW(d)(e)	Vic.	Qld	SA	WA	Tas.	NT	ACT in NSW(d)(e)	ACT(f)	Aust.(d)(e)
RATES PER 100,000 ADULT INDIGENOUS POPULATION										
Total sentenced										
1999(g)	n.a.	725.5	1 591.8	1 205.1	2 645.7	328.6	1 237.9	n.a.	..	n.a.
2000(g)	1 458.3	771.4	1 425.6	1 013.0	2 544.3	381.9	1 021.0	n.p.	n.p.	1 422.0
2001(g)	1 472.8	804.7	1 369.3	1 078.8	2 531.0	335.7	1 032.7	n.p.	n.p.	1 414.5
2001										
March quarter(g)	1 410.5	829.4	1 232.8	1 051.9	2 523.1	348.1	1 037.8	n.p.	n.p.	1 359.4
June quarter(g)	1 454.9	808.2	1 382.3	1 049.5	2 600.6	313.3	1 100.6	n.p.	n.p.	1 430.4
September quarter(g)	1 484.5	798.8	1 416.9	1 081.9	2 620.2	329.9	1 016.4	n.p.	n.p.	1 441.1
December quarter(g)	1 541.2	782.3	1 445.0	1 131.7	2 380.0	351.6	975.8	n.p.	n.p.	1 427.1
2002										
March quarter(g)	1 441.4	786.0	1 412.1	1 097.0	2 085.7	441.9	982.2	n.p.	n.p.	1 353.2
January	1 423.9	749.0	1 389.1	1 043.5	2 102.9	445.5	986.2	n.p.	n.p.	1 339.7
February	1 440.4	783.7	1 396.5	1 131.1	2 074.2	445.5	953.1	n.p.	n.p.	1 344.7
March	1 459.8	825.3	1 450.7	1 116.5	2 079.9	434.9	1 007.4	n.p.	n.p.	1 375.2
Total										
1999(g)	n.a.	900.7	1 791.2	1 613.2	3 030.2	412.8	1 402.7	n.a.	n.p.	n.a.
2000(g)	1 794.3	966.9	1 663.6	1 521.4	2 945.2	464.0	1 234.7	n.p.	n.p.	1 713.7
2001(g)	1 856.4	1 029.7	1 629.6	1 717.6	2 997.8	460.8	1 294.2	n.p.	n.p.	1 754.0
2001										
March quarter(g)	1 772.6	1 039.1	1 465.6	1 700.1	2 997.8	424.7	1 329.2	n.p.	n.p.	1 688.3
June quarter(g)	1 860.0	1 057.9	1 637.6	1 732.5	3 110.5	414.2	1 345.6	n.p.	n.p.	1 780.9
September quarter(g)	1 855.9	1 013.2	1 689.8	1 700.1	3 081.1	482.1	1 254.4	n.p.	n.p.	1 776.1
December quarter(g)	1 937.1	1 008.5	1 725.4	1 737.5	2 801.6	522.0	1 247.5	n.p.	n.p.	1 770.7
2002										
March quarter(g)	1 862.7	1 072.7	1 706.6	1 807.3	2 517.5	590.4	1 217.5	n.p.	n.p.	1 710.4
January	1 851.7	1 026.4	1 677.8	1 795.1	2 513.7	572.8	1 239.6	n.p.	n.p.	1 696.1
February	1 854.7	1 081.9	1 695.4	1 838.9	2 528.1	572.8	1 179.3	n.p.	n.p.	1 703.9
March	1 881.6	1 109.6	1 746.7	1 787.8	2 510.8	625.8	1 233.6	n.p.	n.p.	1 731.1

(a) Some rates in this table have not been published—see Explanatory notes, paragraph 21.

(b) Persons in custody are asked their Indigenous status during reception into custody—see Explanatory notes, paragraphs 10–11.

(c) See Appendix—Interpretation of Indigenous Statistics.

(d) Numbers of Indigenous persons for NSW prior to September 1999 are unavailable—see Explanatory notes paragraph 9.

(e) Prior to the September quarter 2000, all full-time prisoners sentenced in the ACT were held in NSW prisons. Since the September quarter 2000, some ACT-sentenced fine default only prisoners have been held in the ACT. The ACT in NSW figures are a subset of the NSW figures—see Explanatory notes, paragraph 12.

(f) Refers to unsentenced persons in ACT prison custody and, from the September quarter 2000, may include some sentenced fine default only prisoners.

(g) Figures for the quarter and year for first day of the month counts are calculated on a simple average—see Explanatory notes, paragraph 5.

7

PERSONS IN PERIODIC DETENTION, By sex

Sex	NSW	ACT	Aust.(a)
AVERAGE DAILY NUMBER(b)			
Males			
1999	1 190	62	1 252
2000	1 107	69	1 176
2001	974	66	1 040
2001			
March quarter	952	71	1 023
June quarter	974	65	1 039
September quarter	981	65	1 046
December quarter	989	62	1 051
2002			
March quarter	857	56	914
January	883	56	939
February	853	56	910
March	835	58	892
Females			
1999	114	3	117
2000	109	7	115
2001	87	4	91
2001			
March quarter	98	6	104
June quarter	85	4	89
September quarter	82	3	85
December quarter	82	2	85
2002			
March quarter	65	3	68
January	71	3	74
February	62	3	65
March	62	4	65
Persons			
1999	1 304	65	1 369
2000	1 216	75	1 291
2001	1 061	69	1 130
2001			
March quarter	1 049	78	1 127
June quarter	1 059	69	1 127
September quarter	1 063	67	1 131
December quarter	1 071	64	1 135
2002			
March quarter	922	60	982
January	954	59	1 013
February	915	59	974
March	896	61	957

(a) Periodic detention is a form of custody only used in NSW and the ACT.

(b) See Explanatory notes, paragraph 2.

7

PERSONS IN PERIODIC DETENTION, By sex *continued*

Sex	NSW	ACT	Aust.(a)
RATE PER 100,000 ADULT POPULATION			
Males			
1999	50.3	53.0	17.8
2000	46.2	60.0	16.5
2001	40.1	56.5	14.4
2001			
March quarter	39.4	61.9	14.2
June quarter	40.2	55.7	14.4
September quarter	40.3	55.7	14.4
December quarter	40.5	52.8	14.4
2002			
March quarter	35.0	48.2	12.5
January	36.1	47.4	12.8
February	34.8	48.0	12.4
March	34.1	49.2	12.2
Females			
1999	4.6	2.8	1.6
2000	4.4	5.3	1.6
2001	3.5	3.3	1.2
2001			
March quarter	3.9	5.5	1.4
June quarter	3.4	3.6	1.2
September quarter	3.3	2.2	1.1
December quarter	3.3	1.9	1.1
2002			
March quarter	2.6	2.7	0.9
January	2.8	2.5	1.0
February	2.4	2.5	0.9
March	2.5	3.0	0.9
Persons			
1999	27.1	27.6	9.6
2000	25.0	32.3	8.9
2001	21.5	29.6	7.7
2001			
March quarter	21.4	33.3	7.7
June quarter	21.5	29.3	7.7
September quarter	21.6	28.6	7.7
December quarter	21.6	27.1	7.7
2002			
March quarter	18.6	25.2	6.6
January	19.2	24.7	6.8
February	18.4	25.0	6.6
March	18.0	25.9	6.5

(a) Periodic detention is a form of custody only used in NSW and the ACT.

NUMBER ON FIRST DAY OF MONTH.....

	NSW	Vic.	Qld	SA	WA	Tas.	NT	ACT	Aust.
MALES									
1999(b)	262	72	98	27	101	1	16	4	581
2000(b)	296	76	84	24	120	2	37	5	645
2001(b)	293	84	68	19	138	3	105	6	717
2001									
March quarter(b)	288	86	72	19	131	5	74	5	682
June quarter(b)	285	81	71	20	131	3	109	6	706
September quarter(b)	301	85	62	21	138	2	111	7	727
December quarter(b)	300	85	66	17	152	3	123	6	753
2002									
March quarter(b)	304	80	68	16	140	3	111	5	727
January	308	81	71	16	143	4	117	5	745
February	301	80	66	15	135	3	111	5	716
March	302	79	68	18	142	3	105	4	721
FEMALES									
1999(b)	31	5	13	4	9	2	2	1	66
2000(b)	27	5	13	6	13	2	—	1	67
2001(b)	31	6	16	4	16	1	1	—	75
2001									
March quarter(b)	31	7	14	5	15	2	—	—	72
June quarter(b)	31	5	15	4	15	1	—	—	72
September quarter(b)	31	6	18	5	16	1	1	—	77
December quarter(b)	30	6	17	4	17	—	1	1	77
2002									
March quarter(b)	31	6	18	3	16	1	1	1	77
January	31	7	19	3	17	1	1	1	80
February	31	6	16	3	15	2	1	1	75
March	30	6	19	3	15	1	1	—	75
PERSONS									
1999(b)	293	78	111	31	110	2	18	5	647
2000(b)	323	82	97	30	133	5	38	6	712
2001(b)	324	90	84	24	154	4	105	7	792
2001									
March quarter(b)	319	93	86	24	146	7	74	5	754
June quarter(b)	316	87	86	24	146	3	110	6	778
September quarter(b)	332	91	80	26	154	3	112	7	804
December quarter(b)	331	91	84	22	169	3	124	7	830
2002									
March quarter(b)	334	86	86	19	156	5	112	5	804
January	339	88	90	19	160	5	118	6	825
February	332	86	82	18	150	5	112	6	791
March	332	85	87	21	157	4	106	4	796

(a) This table shows prisoners by the State or Territory in which they were sentenced, not where they were held in custody.

(b) Figures for the quarter and year for first day of the month counts are calculated as a simple average—see Explanatory notes, paragraph 5.

9

PERSONS IN COMMUNITY-BASED CORRECTIONS, By sex(a)(b)

Sex	NSW	Vic.	Qld	SA	WA	Tas.	NT	ACT	Aust.
NUMBER ON FIRST DAY OF MONTH(c)									
Males									
2000									
September quarter	15 756	5 393	16 376	4 223	3 530	880	1 075	1 007	48 240
December quarter	15 417	5 432	14 997	4 455	3 793	886	1 138	1 047	47 165
2001									
March quarter	15 255	5 006	14 461	4 565	3 845	819	1 199	1 077	46 227
June quarter	15 408	5 270	14 066	4 659	3 896	794	1 260	1 114	46 465
Females									
2000									
September quarter	2 802	1 141	4 455	1 122	958	188	145	209	11 020
December quarter	2 765	1 145	3 938	1 158	1 011	183	146	222	10 568
2001									
March quarter	2 721	1 054	3 786	1 151	1 071	164	163	239	10 349
June quarter	2 721	1 102	3 658	1 186	1 158	155	171	249	10 400
Persons(d)									
2000									
September quarter	18 682	6 589	20 831	5 367	4 488	1 068	1 220	1 222	59 468
December quarter	18 344	6 671	18 936	5 634	4 804	1 069	1 285	1 274	58 016
2001									
March quarter	18 156	6 166	18 246	5 731	4 916	984	1 362	1 321	56 882
June quarter	18 323	6 497	17 724	5 863	5 054	949	1 431	1 365	57 207
RATE PER 100,000 ADULT POPULATION									
Males									
2000									
September quarter	648.0	294.2	1 200.9	750.6	496.1	516.3	1 474.7	864.1	664.3
December quarter	634.0	296.3	1 099.8	791.9	533.0	519.6	1 561.1	898.5	649.4
2001									
March quarter	627.4	273.1	1 060.4	811.4	540.4	480.5	1 644.3	924.5	636.5
June quarter	633.7	287.5	1 031.5	828.1	547.5	465.5	1 727.5	955.7	639.8
Females									
2000									
September quarter	112.0	59.9	321.3	191.0	134.6	103.7	226.2	175.9	147.8
December quarter	110.5	60.1	284.0	197.1	142.1	101.0	228.8	186.5	141.7
2001									
March quarter	108.8	55.3	273.0	195.8	150.5	90.8	254.8	200.8	138.8
June quarter	108.8	57.8	263.9	201.8	162.7	85.7	267.9	209.2	139.5
Persons(d)									
2000									
September quarter	378.7	176.2	757.4	466.6	337.6	303.9	891.3	518.9	404.0
December quarter	371.8	178.4	688.5	489.8	337.6	304.1	938.5	541.0	394.1
2001									
March quarter	368.0	164.9	663.5	498.3	345.4	279.9	995.0	560.9	386.4
June quarter	371.4	173.8	644.5	509.8	355.1	269.9	1 045.4	579.5	388.6

(a) This table is updated annually in the September quarter publication.

(b) With the exception of Tasmania, the number of persons in community-based corrections includes those persons with breached or suspended orders—see Explanatory notes, paragraph 6.

(c) Figures for each quarter for first day of the month counts are calculated as a simple average—see Explanatory notes, paragraph 5.

(d) Includes persons whose sex is unknown.

NUMBER ON FIRST DAY OF MONTH(c).....

Type of order	NSW	Vic.	Qld	SA	WA	Tas.	NT	ACT	Aust.
SEPTEMBER QUARTER 2000									
Restricted movement	190	—	284	144	86	—	31	—	735
Reparation									
Fine option	135	1 119	9 697	637	397	84	188	—	12 257
Community service	5 598	965	2 051	1 790	1 909	411	354	186	13 264
Supervision (compliance)									
Parole	3 741	900	1 523	953	1 086	89	180	128	8 600
Bail	109	—	—	222	—	—	1	160	492
Sentenced probation	11 072	3 805	7 276	2 426	2 630	608	553	748	29 118
DECEMBER QUARTER 2000									
Restricted movement	184	—	277	176	83	—	28	—	747
Reparation									
Fine option	128	1 124	7 752	1 106	506	66	179	—	10 860
Community service	5 343	915	1 981	1 618	2 008	410	414	189	12 878
Supervision (compliance)									
Parole	3 625	928	1 515	956	1 120	103	181	134	8 563
Bail	118	—	—	231	—	—	1	170	520
Sentenced probation	11 164	3 900	7 412	2 449	2 856	602	560	781	29 725
MARCH QUARTER 2001									
Restricted movement	179	—	269	165	86	—	31	—	731
Reparation									
Fine option	122	1 043	6 835	1 323	501	54	225	—	10 104
Community service	5 260	803	1 999	1 504	2 055	357	422	202	12 602
Supervision (compliance)									
Parole	3 629	917	1 534	946	1 160	104	186	140	8 616
Bail	138	—	—	236	—	—	1	169	544
Sentenced probation	10 994	3 573	7 609	2 430	2 946	566	587	810	29 515
JUNE QUARTER 2001									
Restricted movement	184	—	239	176	80	—	40	—	719
Reparation									
Fine option	122	1 131	6 054	1 523	550	61	261	—	9 701
Community service	5 153	893	2 099	1 430	2 142	326	430	214	12 687
Supervision (compliance)									
Parole	3 616	1 009	1 521	948	1 166	110	179	149	8 698
Bail	168	—	—	233	—	—	—	167	569
Sentenced probation	11 264	3 630	7 811	2 432	3 053	552	611	836	30 188

(a) If a person has more than one type of order, they are counted more than once in this table. If a person has more than one order of the same order type, they are counted once in the order type. With the exception of Tasmania, the number of persons in community-based corrections includes those persons with breached or suspended orders—see Explanatory notes, paragraph 6.

(b) This table is updated annually in the September quarter publication.

(c) Figures for each quarter for first day of the month counts are calculated as a simple average—see Explanatory notes, paragraph 5.

EXPLANATORY NOTES

INTRODUCTION

1 This publication presents statistical series on persons held in either adult corrective services custody or who are serving community-based orders in Australia. It contains data on the number of persons by their sex, type of custody, legal status and sentence type; the number of sentenced persons received into corrective services custody each month; the number of Indigenous persons in corrective services custody by their sex, legal status and sentence type, and the number of Federal prisoners.

2 Statistics presented in this publication are compiled in three ways:

- Average daily prisoner population: Counts taken on each day of the month are summed and divided by the number of days in that month to determine the average daily prisoner population for that month. The average daily periodic detainee population is a count of persons on periodic detention on each day a centre is open, divided by the number of days a centre is open.
- Sentenced prisoner reception figures: Counts are provided each month on the number of receptions where a prisoner is received as a sentenced prisoner plus the number of changes of legal status from unsentenced to sentenced.
- First day of the month prisoner population: Counts of prisoner populations, taken on or near the first day of the month (see Explanatory notes, paragraphs 4 and 5).

3 Although national standards and classifications are used in the compilation of these statistics, some discrepancies remain between the States and Territories. These are due to legislative and procedural differences between jurisdictions and the way that these differences are reflected in agencies' administrative data systems. As part of its development strategy, the ABS is working with corrective services agencies to minimise the effect of these differences.

REFERENCE PERIOD/DATE

4 For the average daily prisoner population and the sentenced prisoner receptions counts, the reference period is the complete reference month. For all other information in the publication, the reference date is the first day of the month. However, not all States and Territories report strictly according to this 'first day of the month' rule:

- The Western Australian and Victorian prison population and Australian Capital Territory prisoners in New South Wales prisons are counted as at midnight on the last day of the month. In these cases the figures provided are taken to represent the prison population at the beginning of the following month to align with practices in other States and Territories.
- The New South Wales prison population is counted on the first Sunday of the month.
- In January 1999 ACT Corrections commenced sending surplus unsentenced prisoners to New South Wales prisons. These unsentenced ACT in NSW prisoners are shown on a daily average basis in Table 3.

5 Calculation of figures for the entire quarter and entire year varies depending on the counting unit and method of counting prisoners. These figures may be subject to rounding:

- Average daily figures: Figures are calculated by weighting the average according to the number of days in each month or year.
- First day of the month: Figures are simple averages. Quarterly figures for each month are added and the total is divided by three; for yearly figures, the figures for each month are added and the total divided by twelve.
- Sentenced receptions: Figures are totals of each month.

SCOPE

6 The scope of the statistics in this publication includes all persons remanded or sentenced to adult custodial corrective services agencies or who are serving community-based orders in each State and Territory in Australia, including Work Outreach Camps and Community Custody Centres in Queensland. Commencing with the 2000–01 reference period, community-based corrections includes those persons with breached or suspended orders, with the exception of Tasmania.

7 In all States and Territories except Victoria and Queensland, persons remanded or sentenced to adult custody are aged 18 years and over. Persons under 18 years are treated as juveniles in most Australian courts and are not remanded or sentenced to custody in adult prisons, other than in exceptional circumstances. However, in Victoria and Queensland, 'adult' refers to persons aged 17 years and over.

DATA SOURCE

8 Statistics in this publication are derived from information collected by the ABS from administrative records held by corrective services agencies within each State and Territory. Statistics on Federal prisoners are derived from records kept by the Criminal Law Division of the Commonwealth Attorney-General's Department.

9 Statistics marked 'n.a.' in tables 5 and 6 are not available for inclusion in this publication. New South Wales Department of Corrective Services modified its computer system to enable provision of counts of Indigenous persons in custody from July 1999. Australian Capital Territory Corrective Services Department has advised that the numbers of Indigenous prisoners sentenced in Australian Capital Territory courts and held in New South Wales prisons had been under reported. This under reporting was resolved from April 2000.

INDIGENOUS IDENTIFICATION

10 In all States and Territories persons are asked during entry into custody whether they identify as Aboriginal or Torres Strait Islander. It is uncommon for corrective services agencies to collect Indigenous status information from sources other than the person's own identification.

11 Some persons in custody are recorded as of unknown Indigenous status on corrective services agencies' information systems, but unknown Indigenous status has not been provided for this collection. Such persons are designated as non-Indigenous. It is intended that unknown Indigenous status will be collected from these systems in future.

AUSTRALIAN CAPITAL TERRITORY PRISONERS

12 The Australian Capital Territory has a detention centre for unsentenced prisoners and a periodic detention centre. With the exception of some sentenced fine default only prisoners, persons sentenced to full-time custody by Australian Capital Territory criminal courts are held in New South Wales prisons.

13 During 2000 the Australian Capital Territory commenced detaining prisoners sentenced for fine default only at their centre for unsentenced persons. To provide greater understanding of the number of prisoners attributed to the Australian Capital Territory, while presenting an accurate picture of the New South Wales prisoner population, statistics relating to Australian Capital Territory prisoners in New South Wales prisons are presented as a subset of the New South Wales figures.

RATES AND RATIOS

14 Imprisonment rates enable comparison of prisoner numbers across States and Territories. Prisoner rates are expressed per 100,000 adult population.

15 For the purpose of this publication the population figures used in the calculation of rates are for persons aged 18 years and over for all States and Territories except Victoria and Queensland where the population used is persons aged 17 and over (see Explanatory Notes, paragraph 7).

16 Rates for the Indigenous adult population in this publication are based on revised projections for 30 June 2002 (refer *Experimental Projections of the Aboriginal and Torres Strait Islander Population 30 June 1996 to 30 June 2006* (Cat. no. 3231.0)). These projections are in turn based on the results of the 1996 Census of Population and Housing.

17 Two series of these projections have been published. The so-called 'higher series' takes into account a possible change in propensity for people to identify themselves as Indigenous since the last Population Census and estimates this from the last inter-censal period. The lower series assumes no such change has taken place since 1996. The lower of the two series was used in calculating rates for the Indigenous adult population in this publication. This is because, after discussions with representatives of Corrective Services agencies, it was felt that the propensity to identify as Indigenous has not increased to the same extent in the prison environment as might have occurred in the wider community.

18 Rates for the total adult prisoner population are calculated using the Estimated Resident Population (ERP) for each of the States and Territories (refer *Population by Age and Sex, Australian States and Territories* (Cat. no. 3201.0)). As the population changes over time the denominator used for the calculation of rates varies, depending on the reference period. Rates are calculated using ERP for two quarters prior to their respective quarters. Thus for the March quarter 2002, ERP for the September quarter 2001 was used in the calculation of rates. This approach uses the latest ERP available at the time of publication.

19 The ratio of imprisonment rates of Indigenous persons to non-Indigenous persons is calculated by dividing the Indigenous imprisonment rate for each period and State or Territory by the corresponding non-Indigenous imprisonment rate.

20 The ratio indicates the extent to which the imprisonment rates of Indigenous persons exceed the imprisonment rates of non-Indigenous persons. A ratio of 20.0 indicates that, for the given State or Territory, the imprisonment rate of Indigenous persons per 100,000 adult population is 20 times that of the imprisonment rate of non-Indigenous persons.

21 In some instances Indigenous rates and ratios have not been published. Where this occurs, the cell concerned contains the symbol 'n.p.' This happens where, either the number of persons in custody is less than 10, or where the denominator population on which the rate is calculated is less than 5,000. This has been done because such rates and ratios vary widely from month to month with small variations in numbers of persons, and therefore may give an inaccurate reflection of the relative involvement of Indigenous persons in custody.

EXPLANATORY NOTES *continued*

RELATED PUBLICATIONS

ABS publications

22 Other ABS publications which may be of interest include:

Australian Standard Offence Classification, 1997 (ASOC) (Cat. no. 1234.0)—irregular

Crime and Safety, Australia, April 1998 (Cat. no. 4509.0)—irregular

Higher Criminal Courts, Australia, 2000-2001 (Cat. no. 4513.0)—annual

Prisoners in Australia, 2001 (Cat. no. 4517.0)—annual

Recorded Crime, Australia, 2001 (Cat. no. 4510.0)—annual

23 Current publications produced by the ABS are listed in the *Catalogue of Publications and Products* (Cat. no. 1101.0). The ABS also issues, on Tuesdays and Fridays, a *Release Advice* (Cat. no. 1105.0) which lists publications to be released in the next few days. The *Catalogue* and *Release Advice* are available from any ABS office, and at our website: <http://www.abs.gov.au>.

APPENDIX Interpretation of Indigenous Statistics

INTRODUCTION

Tables 5 and 6 in this publication provide nationally comparable statistics on imprisonment of Aboriginal and Torres Strait Islander (Indigenous) people. There are a number of issues that bear on the statistical measures of Indigenous imprisonment. This technical appendix provides advice on how these statistics should be interpreted.

NUMBERS

The first and most basic measure of Indigenous imprisonment is the *number of persons imprisoned*. Imprisoned persons are classified as Indigenous if they identify themselves as Aboriginal or Torres Strait Islander at the time they are received into prison custody. These statistics in *Corrective Services Australia* are derived from administrative records held by corrective services agencies in each jurisdiction. The accuracy of the Indigenous component of the statistics is dependent upon the quality of the information collected by these agencies.

PROPORTIONS

The second measure is the Indigenous *proportion of the prisoner population*. This relates the number of Indigenous persons in custody to the total number of persons in custody, and provides a basis for comparing the composition of the prison population across jurisdictions.

RATES

The third measure of Indigenous imprisonment is the *rate of imprisonment*, that is the number of Indigenous prisoners per 100,000 adults in the Indigenous population. The number of persons imprisoned in any jurisdiction is partly a function of the size of the population in that jurisdiction. All other things being equal, a jurisdiction such as the Northern Territory with a large Indigenous population will have a larger number of Indigenous prisoners than a jurisdiction such as Tasmania with a small Indigenous population. The rate of imprisonment provides a basis for comparing the relative likelihood that any Indigenous adult in a State or Territory will be imprisoned.

RATIOS

The fourth measure of Indigenous imprisonment is the *ratio of Indigenous to non-Indigenous imprisonment*. Australian States and Territories have widely varying rates of imprisonment. Hence, the likelihood that any Indigenous adult will be imprisoned in any jurisdiction is partly a function of the overall likelihood of imprisonment in that jurisdiction. This ratio provides a measure of how much more likely it is that an Indigenous adult in a particular jurisdiction will be imprisoned compared with his or her non-Indigenous counterparts.

GLOSSARY

Corrective services custody	Confinement in a place intended primarily for the purpose of confining prisoners, such as a prison, prison farm, Periodic Detention Centre or Community Custody Centre.
Community-based corrections	This refers to the community-based management of court-ordered sanctions, post-prison administrative arrangements and fine conversions for offenders, which principally involve the provision of one or more of the following activities: supervision, programmes or community work.
Federal sentenced prisoner	Persons charged and sentenced under a Commonwealth statute. For the purposes of this publication Federal sentenced prisoners are those persons who are recognised by the Criminal Law Division of the Commonwealth Attorney-General's Department as having been charged and sentenced under a Commonwealth statute. Federal sentenced prisoners are counted by the State or Territory in which they were sentenced, not where they were held in custody.
Fine default only	A sentence type indicating that, at the time, the prisoner is serving a sentence for default of a fine and nothing else.
Full-time custody	A type of custody where a prisoner is required to be held in custody on a full-time basis.
Indigenous prisoner	A prisoner who identifies as either Aboriginal or Torres Strait Islander.
Legal status	An offender may be either sentenced or unsentenced depending on the warrant(s) or court order(s) which provide the legal basis for the detention of the offender in custody.
Open custody	A custodial regime for managing prisoners which does not require them to be confined by a secure perimeter physical barrier, irrespective of whether a physical barrier exists.
Other sentenced	A sentence type indicating that, at the time, a person is serving a sentence other than, or in addition to, a fine default sentence.
Periodic detention	A type of custody or order where a sentenced prisoner is required to be held in custody for two consecutive days in a one-week period.
Prisoner	A person held in custody. For the purposes of this collection, prisoners are those whose confinement is the responsibility of a corrective services agency.
Reparation	Reparation refers to all offenders with a community service order or fine option that requires them to undertake unpaid work.
Restricted movement	This refers to offenders who are subject to a system of restricted movement including supervision and/or electronic monitoring.
Secure custody	A custodial regime for managing prisoners that requires them to be confined by a secure physical barrier.
Sentenced	A legal status indicating that a person has received a custodial order from a court in response to a conviction for a criminal offence.

Sentenced prisoner reception Includes persons who enter corrective services custody from the community, having received a sentence of imprisonment as an outcome of a court proceeding. It also includes persons who are sentenced to custody while in custody on remand (i.e. change status from a remand to a sentenced prisoner). Sentenced prisoners in custody who receive a further sentence of imprisonment are not counted as sentenced receptions.

Two types of sentenced prisoner reception are distinguished:

- A *fine default only* reception is a sentenced reception where a person enters custody as a result of defaulting on the payment of a fine.
- An *other sentenced reception* is a sentenced reception (including changes of status from unsentenced to sentenced) for anything other than a fine default only reception.

Note that Victorian reception figures do not include prisoners who change status from unsentenced to sentenced in the period.

Supervision (compliance) This includes community-based orders other than those categorised as restricted movement or reparation (e.g. parole, bail and sentenced probation).

Unsentenced A legal status indicating that a person is confined to custody while awaiting the outcome of their trial. Some sentenced prisoners may also be "remanded in custody", (i.e. are unsentenced) in relation to other offences pending a court hearing. In such cases, these prisoners are counted as sentenced.

FOR MORE INFORMATION...

- INTERNET* **www.abs.gov.au** the ABS web site is the best place to start for access to summary data from our latest publications, information about the ABS, advice about upcoming releases, our catalogue, and Australia Now—a statistical profile.
- LIBRARY* A range of ABS publications is available from public and tertiary libraries Australia-wide. Contact your nearest library to determine whether it has the ABS statistics you require, or visit our web site for a list of libraries.
- CPI INFOLINE* For current and historical Consumer Price Index data, call 1902 981 074 (call cost 77c per minute).
- DIAL-A-STATISTIC* For the latest figures for National Accounts, Balance of Payments, Labour Force, Average Weekly Earnings, Estimated Resident Population and the Consumer Price Index call 1900 986 400 (call cost 77c per minute).

INFORMATION SERVICE

Data which have been published and can be provided within five minutes are free of charge. Our information consultants can also help you to access the full range of ABS information—ABS user-pays services can be tailored to your needs, time frame and budget. Publications may be purchased. Specialists are on hand to help you with analytical or methodological advice.

- PHONE* **1300 135 070**
- EMAIL* **client.services@abs.gov.au**
- FAX* 1300 135 211
- POST* Client Services, ABS, GPO Box 796, Sydney 1041

WHY NOT SUBSCRIBE?

ABS subscription services provide regular, convenient and prompt deliveries of ABS publications and products as they are released. Email delivery of monthly and quarterly publications is available.

- PHONE* 1300 366 323
- EMAIL* subscriptions@abs.gov.au
- FAX* 03 9615 7848
- POST* Subscription Services, ABS, GPO Box 2796Y, Melbourne 3001



2451200003021
ISSN 1440-5997

RRP \$22.00